



ELECTRONIC COPY

LABORATORY GROWN DIAMOND REPORT

LG723551966
Report verification at igi.org

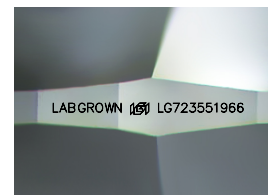
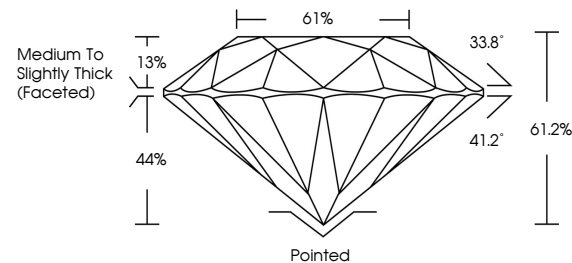
July 26, 2025	
IGI Report Number	LG723551966
Description	LABORATORY GROWN DIAMOND
Shape and Cutting Style	ROUND BRILLIANT
Measurements	6.44 - 6.48 X 3.95 MM
GRADING RESULTS	
Carat Weight	1.02 CARAT
Color Grade	E
Clarity Grade	VVS 2
Cut Grade	EXCELLENT

ADDITIONAL GRADING INFORMATION

Polish	EXCELLENT
Symmetry	EXCELLENT
Fluorescence	NONE
Inscription(s)	LABGROWN 16 LG723551966

Comments: This Laboratory Grown Diamond was created by Chemical Vapor Deposition (CVD) growth process.
Type IIa

PROPORTIONS



Sample Image Used

COLOR

D E F G H I J Faint Very Light Light

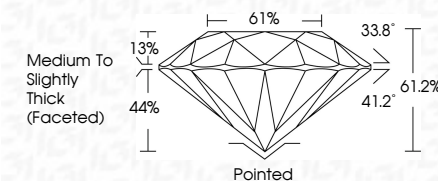
CLARITY

IF	VS ¹⁻²	VS ¹⁻²	SI ¹⁻²	I ¹⁻³
Internally Flawless	Very Very Slightly Included	Very Slightly Included	Slightly Included	Included

LABORATORY GROWN DIAMOND REPORT



July 26, 2025	
IGI Report Number	LG723551966
Description	LABORATORY GROWN DIAMOND
Shape and Cutting Style	ROUND BRILLIANT
Measurements	6.44 - 6.48 X 3.95 MM
GRADING RESULTS	
Carat Weight	1.02 CARAT
Color Grade	E
Clarity Grade	VVS 2
Cut Grade	EXCELLENT



ADDITIONAL GRADING INFORMATION

Polish	EXCELLENT
Symmetry	EXCELLENT
Fluorescence	NONE
Inscription(s)	LABGROWN (IGI) LG723551966
Comments: This Laboratory Grown Diamond was created by Chemical Vapor Deposition (CVD) growth process. Type IIa	



IG



© IGI 2020, International Gemological Institute

FD - 10 20

www.igi.org



THIS DOCUMENT WAS PRODUCED WITH THE FOLLOWING SECURITY MEASURES: SPECIAL DOCUMENT PAPER, INK SCREENS, WATERMARK, BACKGROUND DESIGNS, HOLOGRAM AND OTHER SECURITY FEATURES NOT LISTED AND DO EXCEED DOCUMENT SECURITY INDUSTRY GUIDELINES

July 26, 2025
GJ Report No | G723551966

Report No. LG723551966	1.02 CARAT	
Color	VVS 2	Polished
Carat Weight	EXCELLENT	EXCELLENT
Color Grade	61.2%	EXCELLENT
Clarity Grade	61%	NONE
Cut Grade	Medium to slightly thick faceted	LAGERSOWN 68
Depth		
Table		
Girdle		
Culet		
Polish		
Symmetry		
Fluorescence		
Inscriptions (S)		

Comments:
This Laboratory Grown Diamond was
created by Chemical Vapor Deposition
(CVD) growth process.