



ELECTRONIC COPY

LABORATORY GROWN DIAMOND REPORT

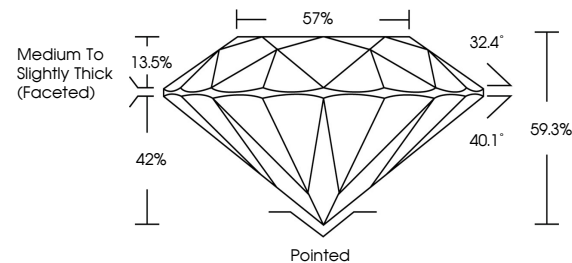
LG723551975
Report verification at igi.org

July 26, 2025	
IGI Report Number	LG723551975
Description	LABORATORY GROWN DIAMOND
Shape and Cutting Style	ROUND BRILLIANT
Measurements	6.99 - 7.06 X 4.17 MM
GRADING RESULTS	
Carat Weight	1.25 CARAT
Color Grade	D
Clarity Grade	VS 1
Cut Grade	EXCELLENT

ADDITIONAL GRADING INFORMATION

Polish	EXCELLENT
Symmetry	EXCELLENT
Fluorescence	NONE
Inscription(s)	LABGROWN 161 LG723551975
Comments: This Laboratory Grown Diamond was created by Chemical Vapor Deposition (CVD) growth process.	
Type IIa	

PROPORTIONS



Sample Image Used

COLOR

D E F G H I J Faint Very Light Light

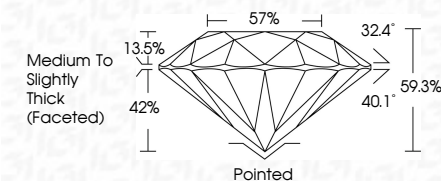
CLARITY

IF	VS ¹⁻²	VS ¹⁻²	SI ¹⁻²	I ¹⁻³
Internally Flawless	Very Very Slightly Included	Very Slightly Included	Slightly Included	Included

LABORATORY GROWN DIAMOND REPORT



July 26, 2025	
IGI Report Number	LG723551975
Description	LABORATORY GROWN DIAMOND
Shape and Cutting Style	ROUND BRILLIANT
Measurements	6.99 - 7.06 X 4.17 MM
GRADING RESULTS	
Carat Weight	1.25 CARAT
Color Grade	D
Clarity Grade	VS 1
Cut Grade	EXCELLENT



ADDITIONAL GRADING INFORMATION

Polish	EXCELLENT
Symmetry	EXCELLENT
Fluorescence	NONE
Inscription(s)	LABGROWN (IGI) LG723551975
Comments: This Laboratory Grown Diamond was created by Chemical Vapor Deposition (CVD) growth process.	
Type Ila	



IG



© IGI 2020, International Gemological Institute

FD - 10 20



THIS DOCUMENT WAS PRODUCED WITH THE FOLLOWING SECURITY MEASURES: SPECIAL DOCUMENT PAPER, INK SCREENS, WATERMARK, BACKGROUND DESIGNS, HOLOGRAM AND OTHER SECURITY FEATURES NOT LISTED AND DO EXCEED DOCUMENT SECURITY INDUSTRY GUIDELINES

www.igi.org

July 26, 2025
GJ Report No | G723551975

IGI Report No LG72
 POUND BRILLIANT

\$5.99 - 7.06 X 4.17 MM

Carat Weight 1.25 CARAT

D

Color Grade

Clarity Grade	VS 1
VS 1	

Cut Grade	EXCELLENT
Depth	59.3%

Table 57%

Girdle
Medium To Slightly
Thick (Faceted)

[illegible]

Polish	EXCELLENT
Czech	POOR

Symmetry	EXCELLENT
Clarity	NONE

Fluorescence	LABGROWN 157	NONE
Inscription(s)		

Comments:

Comments:
This Laboratory Grown Diamond was
created by: Chemical Vapor Deposition

created by Chemical Vapor Deposition (CVD) growth process.

type IIa