



**ELECTRONIC COPY**

## LABORATORY GROWN DIAMOND REPORT

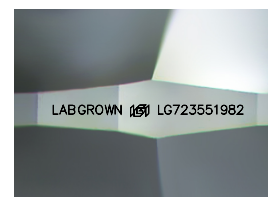
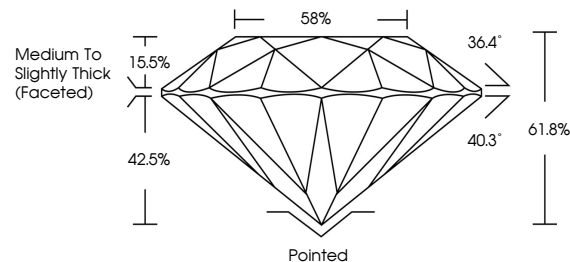
LG723551982  
Report verification at [igi.org](https://igi.org)

July 26, 2025	
IGI Report Number	LG723551982
Description	LABORATORY GROWN DIAMOND
Shape and Cutting Style	ROUND BRILLIANT
Measurements	6.48 - 6.50 X 4.01 MM
GRADING RESULTS	
Carat Weight	1.05 CARAT
Color Grade	D
Clarity Grade	SI 1
Cut Grade	EXCELLENT

### ADDITIONAL GRADING INFORMATION

Polish	EXCELLENT
Symmetry	EXCELLENT
Fluorescence	NONE
Inscription(s)	LABGROWN  LG723551982
Comments: This Laboratory Grown Diamond was created by Chemical Vapor Deposition (CVD) growth process.	
Type IIa	

## PROPORTIONS



Sample Image Used

## COLOR

D E F G H I J Faint Very Light Light

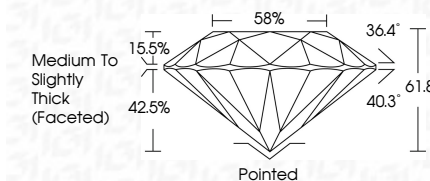
## CLARITY

IF	VS <sup>1-2</sup>	VS <sup>1-2</sup>	SI <sup>1-2</sup>	I <sup>1-3</sup>
Internally Flawless	Very Very Slightly Included	Very Slightly Included	Slightly Included	Included

## LABORATORY GROWN DIAMOND REPORT



July 26, 2025	
IGI Report Number	LG723551982
Description	LABORATORY GROWN DIAMOND
Shape and Cutting Style	ROUND BRILLIANT
Measurements	6.48 - 6.50 X 4.01 MM
GRADING RESULTS	
Carat Weight	1.01 CARAT
Color Grade	D
Clarity Grade	SI 1
Cut Grade	EXCELLENT



### ADDITIONAL GRADING INFORMATION

Polish	EXCELLENT
Symmetry	EXCELLENT
Fluorescence	NONE
Inscription(s)	LABGROWN (151) LG723551982
Comments: This Laboratory Grown Diamond was created by Chemical Vapor Deposition (CVD) growth process.	
Type IIa	



© IGI 2020, International Gemological Institute

FD - 10 20



THIS DOCUMENT WAS PRODUCED WITH THE FOLLOWING SECURITY MEASURES: SPECIAL DOCUMENT PAPER, INK SCREENS, WATERMARK, BACKGROUND DESIGNS, HOLOGRAM, AND OTHER SECURITY FEATURES NOT LISTED AND DO EXCEED DOCUMENT SECURITY INDUSTRY GUIDELINES.

**www.igi.org**

July 26, 2025  
GI Report No LG723551982

GI Report No LG72  
DOY AND BRILLIANT

ROUND BRILLIANT  
E 48 - 6.50 V 4.01 MM

3.48 - 6.50 X 4.01 MM  
1.05 CARAT  
Carat Weight

Color Grade D

Clarity Grade	SI 1
---------------	------

Out Grade	EXCELLENT
Depth	4.1 mm

Depth	61.8%
Table	58%

Girdle

Thick (Faceted)

	Pointed	EXCELLENT
Culet		
Polish		

**EXCELLENT**

Fluorescence	NONE
DESCRIPTION(s)	ARGDOWN 1651

Subscription (3)  
LAWGROWN 1994  
LG723551982

**Comments:**  
This Laboratory Grown Diamond was

created by Chemical Vapor Deposition (CVD) growth process.

Type IIa