

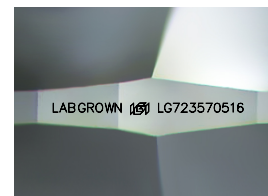
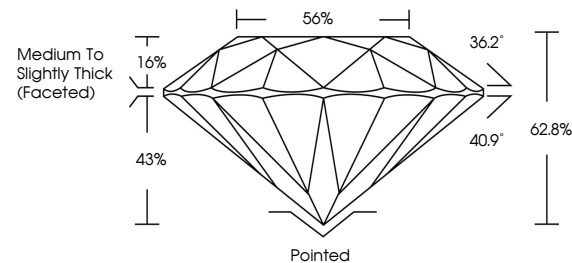


**ELECTRONIC COPY**

## LABORATORY GROWN DIAMOND REPORT

LG723570516  
Report verification at [igi.org](https://igi.org)

## PROPORTIONS



Sample Image Used

**COLOR**

D E F G H I J Faint Very Light Light

## CLARITY

IF	VS <sup>1-2</sup>	VS <sup>1-2</sup>	SI <sup>1-2</sup>	I <sup>1-3</sup>
Internally Flawless	Very Very Slightly Included	Very Slightly Included	Slightly Included	Included



© IGI 2020, International Gemological Institute

FD - 10 20

**www.igi.org**

## LABORATORY GROWN DIAMOND REPORT



July 30, 2025

IGI Report Number **LG723570516**

Description	LABORATORY GROWN DIAMOND
-------------	--------------------------

Shape and Cutting Style **ROUND BRILLIANT**

Measurements 11.61 - 11.66 X 7.31 MM

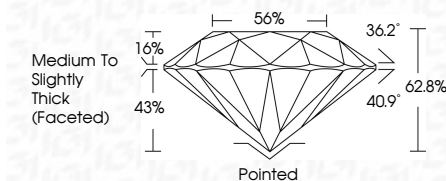
## GRADING RESULTS

Carat Weight **6.11 CARATS**

Color Grade E

Clarity Grade **VVS 2**

Cut Grade **EXCELLENT**



### ADDITIONAL GRADING INFORMATION

Polish **EXCELLENT**Symmetry **EXCELLENT**Fluorescence **NONE**

Inscription(s) LABGROWN 163 LG723570516

Comments: This Laboratory Grown Diamond was created by Chemical Vapor Deposition (CVD) growth process.  
Type IIa

[illegible]