



**ELECTRONIC COPY**

## LABORATORY GROWN DIAMOND REPORT

LG724520383  
Report verification at [igi.org](https://igi.org)

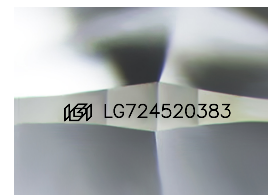
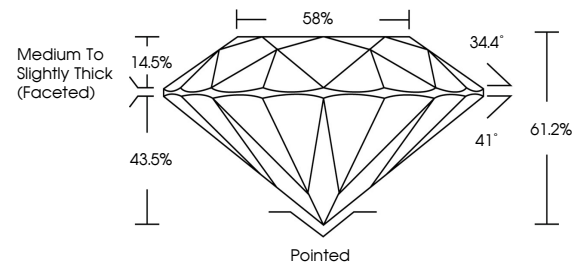
|                         |                          |
|-------------------------|--------------------------|
| July 24, 2025           |                          |
| IGI Report Number       | LG724520383              |
| Description             | LABORATORY GROWN DIAMOND |
| Shape and Cutting Style | ROUND BRILLIANT          |
| Measurements            | 6.55 - 6.63 X 4.03 MM    |
| GRADING RESULTS         |                          |
| Carat Weight            | 1.07 CARAT               |
| Color Grade             | E                        |
| Clarity Grade           | VS 1                     |
| Cut Grade               | IDEAL                    |

### ADDITIONAL GRADING INFORMATION

|                |                 |
|----------------|-----------------|
| Polish         | EXCELLENT       |
| Symmetry       | EXCELLENT       |
| Fluorescence   | NONE            |
| Inscription(s) | 151 LG724520383 |

Comments: This Laboratory Grown Diamond was created by Chemical Vapor Deposition (CVD) growth process.  
Type IIa

## PROPORTIONS



Sample Image Used

## COLOR

D E F G H I J Faint Very Light Light

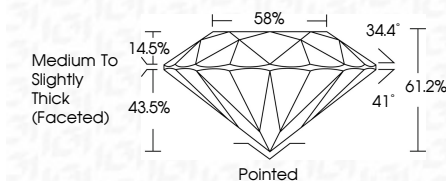
## CLARITY

| IF                  | VS <sup>1-2</sup>           | VS <sup>1-2</sup>      | SI <sup>1-2</sup> | I <sup>1-3</sup> |
|---------------------|-----------------------------|------------------------|-------------------|------------------|
| Internally Flawless | Very Very Slightly Included | Very Slightly Included | Slightly Included | Included         |

## LABORATORY GROWN DIAMOND REPORT



|                         |                          |
|-------------------------|--------------------------|
| July 24, 2025           |                          |
| IGI Report Number       | LG724520383              |
| Description             | LABORATORY GROWN DIAMOND |
| Shape and Cutting Style | ROUND BRILLIANT          |
| Measurements            | 6.55 - 6.63 X 4.03 MM    |
| GRADING RESULTS         |                          |
| Carat Weight            | 1.01 CARAT               |
| Color Grade             | E                        |
| Clarity Grade           | VS 1                     |
| Cut Grade               | IDEAL                    |



### ADDITIONAL GRADING INFORMATION

|   |   |
|---|---|
| Polish  | EXCELLENT   |
| Symmetry  | EXCELLENT   |
| Fluorescence  | NONE  |
| Inscription(s)  |  LG724520383 |
| <p>Comments: This Laboratory Grown Diamond was created by Chemical Vapor Deposition (CVD) growth process.</p> <p>Type IIa</p> |   |



© IGI 2020, International Gemological Institute

FD - 10 20

**www.igi.org**



THIS DOCUMENT WAS PRODUCED WITH THE FOLLOWING SECURITY MEASURES: SPECIAL DOCUMENT PAPER, INK SCREENS, WATERMARK, BACKGROUND DESIGNS, HOLOGRAM AND OTHER SECURITY FEATURES NOT LISTED AND DO EXCEED DOCUMENT SECURITY INDUSTRY GUIDELINES

July 24, 2025  
GJ Report No | G724520383

GI Report No LG72  
POXIND BRILLIANT

6.55 - 6.63 X 4.03 MM

3.00 - 6.00 X 4.00 MM  
Carat Weight  
1.07 CARAT

Color Grade

| Clarity Grade | VS 1 |
|---------------|------|
|---------------|------|

|           |       |
|-----------|-------|
| Cut Grade | IDEAL |
| Depth     | 61.2% |

|       |     |
|-------|-----|
| Table | 58% |
|-------|-----|

Medium to Slightly Thick (Faceted)

|     | Culet | Pointed |
|-----|-------|---------|
| 1   |       |         |
| 2   |       |         |
| 3   |       |         |
| 4   |       |         |
| 5   |       |         |
| 6   |       |         |
| 7   |       |         |
| 8   |       |         |
| 9   |       |         |
| 10  |       |         |
| 11  |       |         |
| 12  |       |         |
| 13  |       |         |
| 14  |       |         |
| 15  |       |         |
| 16  |       |         |
| 17  |       |         |
| 18  |       |         |
| 19  |       |         |
| 20  |       |         |
| 21  |       |         |
| 22  |       |         |
| 23  |       |         |
| 24  |       |         |
| 25  |       |         |
| 26  |       |         |
| 27  |       |         |
| 28  |       |         |
| 29  |       |         |
| 30  |       |         |
| 31  |       |         |
| 32  |       |         |
| 33  |       |         |
| 34  |       |         |
| 35  |       |         |
| 36  |       |         |
| 37  |       |         |
| 38  |       |         |
| 39  |       |         |
| 40  |       |         |
| 41  |       |         |
| 42  |       |         |
| 43  |       |         |
| 44  |       |         |
| 45  |       |         |
| 46  |       |         |
| 47  |       |         |
| 48  |       |         |
| 49  |       |         |
| 50  |       |         |
| 51  |       |         |
| 52  |       |         |
| 53  |       |         |
| 54  |       |         |
| 55  |       |         |
| 56  |       |         |
| 57  |       |         |
| 58  |       |         |
| 59  |       |         |
| 60  |       |         |
| 61  |       |         |
| 62  |       |         |
| 63  |       |         |
| 64  |       |         |
| 65  |       |         |
| 66  |       |         |
| 67  |       |         |
| 68  |       |         |
| 69  |       |         |
| 70  |       |         |
| 71  |       |         |
| 72  |       |         |
| 73  |       |         |
| 74  |       |         |
| 75  |       |         |
| 76  |       |         |
| 77  |       |         |
| 78  |       |         |
| 79  |       |         |
| 80  |       |         |
| 81  |       |         |
| 82  |       |         |
| 83  |       |         |
| 84  |       |         |
| 85  |       |         |
| 86  |       |         |
| 87  |       |         |
| 88  |       |         |
| 89  |       |         |
| 90  |       |         |
| 91  |       |         |
| 92  |       |         |
| 93  |       |         |
| 94  |       |         |
| 95  |       |         |
| 96  |       |         |
| 97  |       |         |
| 98  |       |         |
| 99  |       |         |
| 100 |       |         |

Polish

|              |           |
|--------------|-----------|
| Fluorescence | EXCELLENT |
| Symmetry     | NONE      |

| Inscription(s) | 1991 LG724520383 |
|----------------|------------------|
|                |                  |

Comments:

**This Laboratory Grown Diamond was  
created by Chemical Vapor Deposition**

(CVD) growth process.  
Type IIa