



**ELECTRONIC COPY**

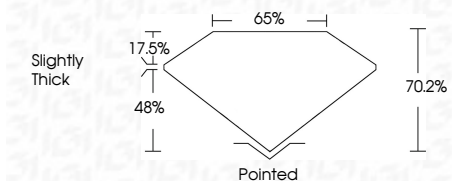
724522470  
Report verification at igi.org



September 15, 2025  
IGI Report Number **724522470**  
Description **NATURAL DIAMOND**  
Shape and Cutting Style **SQUARE EMERALD CUT**  
Measurements **5.33 X 5.27 X 3.70 MM**

**GRADING RESULTS**

Carat Weight **1.00 CARAT**  
Color Grade **K**  
Clarity Grade **VS 2**  
Cut Grade **VERY GOOD**



**ADDITIONAL GRADING INFORMATION**

Polish **EXCELLENT**  
Symmetry **EXCELLENT**  
Fluorescence **VERY SLIGHT**  
Inscription(s) **IGI 724522470**



**IGI**

September 15, 2025  
IGI Report No 724522470  
**SQUARE EMERALD CUT**  
5.33 X 5.27 X 3.70 MM  
1.00 CARAT  
K  
VS 2  
VERY GOOD  
70.2%  
65%  
Slightly Thick  
Pointed  
EXCELLENT  
EXCELLENT  
VERY SLIGHT  
IGI 724522470

**DIAMOND REPORT**

September 15, 2025  
IGI Report Number **724522470**  
Description **NATURAL DIAMOND**  
Shape and Cutting Style **SQUARE EMERALD CUT**  
Measurements **5.33 X 5.27 X 3.70 MM**

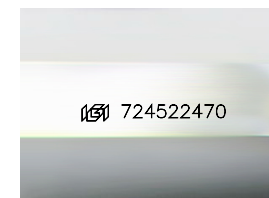
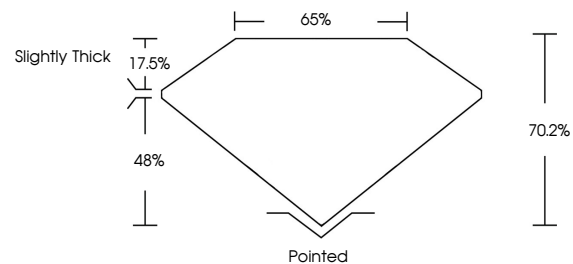
**GRADING RESULTS**

Carat Weight **1.00 CARAT**  
Color Grade **K**  
Clarity Grade **VS 2**  
Cut Grade **VERY GOOD**

**ADDITIONAL GRADING INFORMATION**

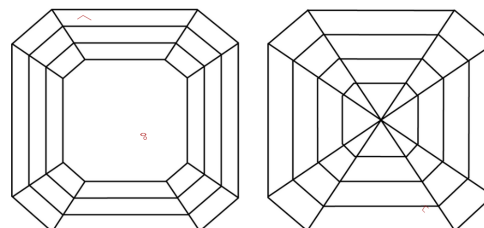
Polish **EXCELLENT**  
Symmetry **EXCELLENT**  
Fluorescence **VERY SLIGHT**  
Inscription(s) **IGI 724522470**

**PROPORTIONS**



Sample Image Used

**CLARITY CHARACTERISTICS**



**KEY TO SYMBOLS**

Red symbols indicate internal characteristics.  
Green symbols indicate external characteristics.

**COLOR**

D - F	G - J	K - M	N - R	S - Z	FANCY
Colorless	Near Colorless	Slightly Tinted	Very Light Color	Light Color	

**CLARITY**

IF	VVS <sup>1-2</sup>	VS <sup>1-2</sup>	SI <sup>1-2</sup>	I <sup>1-3</sup>
Internally Flawless	Very Very Slightly Included	Very Slightly Included	Slightly Included	Included

