



**ELECTRONIC COPY**

LG724559195  
Report verification at igi.org



September 3, 2025  
IGI Report Number **LG724559195**  
Description **LABORATORY GROWN DIAMOND**  
Shape and Cutting Style **CUT CORNERED  
RECTANGULAR MODIFIED  
BRILLIANT**  
Measurements **15.30 X 10.61 X 6.62 MM**  
**GRADING RESULTS**  
Carat Weight **10.04 CARATS**  
Color Grade **F**  
Clarity Grade **VS 1**

September 3, 2025  
IGI Report Number **LG724559195**  
Description **LABORATORY GROWN DIAMOND**  
Shape and Cutting Style **CUT CORNERED RECTANGULAR  
MODIFIED BRILLIANT**  
Measurements **15.30 X 10.61 X 6.62 MM**

**GRADING RESULTS**

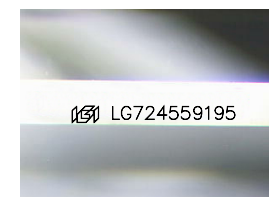
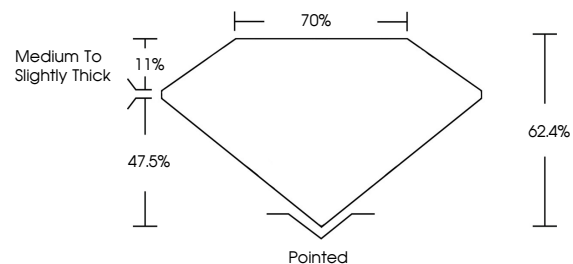
Carat Weight **10.04 CARATS**  
Color Grade **F**  
Clarity Grade **VS 1**

**ADDITIONAL GRADING INFORMATION**

Polish **EXCELLENT**  
Symmetry **EXCELLENT**  
Fluorescence **NONE**  
Inscription(s) **IGI LG724559195**

Comments: This Laboratory Grown Diamond was created by Chemical Vapor Deposition (CVD) growth process. Type IIa

**PROPORTIONS**



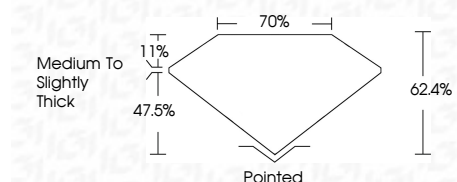
Sample Image Used

**COLOR**

D E F G H I J Faint Very Light Light

**CLARITY**

IF	VS <sup>1-2</sup>	VS <sup>1-2</sup>	SI <sup>1-2</sup>	I <sup>1-3</sup>
Internally Flawless	Very Very Slightly Included	Very Slightly Included	Slightly Included	Included



**ADDITIONAL GRADING INFORMATION**

Polish **EXCELLENT**  
Symmetry **EXCELLENT**  
Fluorescence **NONE**  
Inscription(s) **IGI LG724559195**  
Comments: This Laboratory Grown Diamond was created by Chemical Vapor Deposition (CVD) growth process. Type IIa



**IGI**



September 3, 2025  
IGI Report No LG724559195  
CUT CORNERED RECT. MODIFIED BRILLIANT  
15.30 X 10.61 X 6.62 MM  
10.04 CARATS  
F  
10.04 CARATS  
F  
VS 1  
62.4%  
70%  
Medium to Slightly Thick  
Pointed  
EXCELLENT  
EXCELLENT  
NONE  
IGI LG724559195

Comments: This Laboratory Grown Diamond was created by Chemical Vapor Deposition (CVD) growth process. Type IIa