



ELECTRONIC COPY

LG724562507
Report verification at igi.org



September 2, 2025

IGI Report Number **LG724562507**

Description **LABORATORY GROWN DIAMOND**

Shape and Cutting Style **CUT CORNERED
RECTANGULAR MODIFIED
BRILLIANT**

Measurements **14.37 X 9.84 X 7.30 MM**

GRADING RESULTS

Carat Weight **10.04 CARATS**

Color Grade **G**

Clarity Grade **VVS 2**

September 2, 2025

IGI Report Number **LG724562507**

Description **LABORATORY GROWN DIAMOND**

Shape and Cutting Style **CUT CORNERED RECTANGULAR
MODIFIED BRILLIANT**

Measurements **14.37 X 9.84 X 7.30 MM**

GRADING RESULTS

Carat Weight **10.04 CARATS**

Color Grade **G**

Clarity Grade **VVS 2**

ADDITIONAL GRADING INFORMATION

Polish **EXCELLENT**

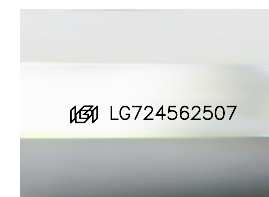
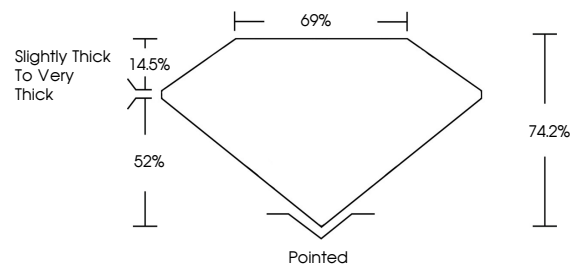
Symmetry **EXCELLENT**

Fluorescence **NONE**

Inscription(s) **IGI LG724562507**

Comments: This Laboratory Grown Diamond was created by Chemical Vapor Deposition (CVD) growth process. Type IIa

PROPORTIONS



Sample Image Used

COLOR

D E F G H I J Faint Very Light Light

CLARITY

IF	VS ¹⁻²	VS ¹⁻²	SI ¹⁻²	I ¹⁻³
Internally Flawless	Very Very Slightly Included	Very Slightly Included	Slightly Included	Included

ADDITIONAL GRADING INFORMATION

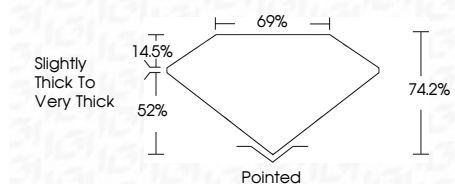
Polish **EXCELLENT**

Symmetry **EXCELLENT**

Fluorescence **NONE**

Inscription(s) **IGI LG724562507**

Comments: This Laboratory Grown Diamond was created by Chemical Vapor Deposition (CVD) growth process. Type IIa



IGI



September 2, 2025
IGI Report No LG724562507
CUT CORNERED RECT. MODIFIED BRILLIANT
14.37 X 9.84 X 7.30 MM
Carat Weight 10.04 CARATS
Color Grade G
Clarity Grade VVS 2
Depth 74.2%
Table 69%
Girdle Slightly Thick To Very Thick
Culet Pointed
Polish EXCELLENT
Symmetry EXCELLENT
Fluorescence NONE
Inscription(s) IGI LG724562507
Comments: This Laboratory Grown Diamond was created by Chemical Vapor Deposition (CVD) growth process. Type IIa