



ELECTRONIC COPY

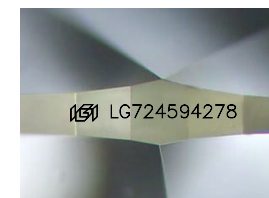
LG724594278
Report verification at igi.org



July 30, 2025
IGI Report Number **LG724594278**
Description **LABORATORY GROWN DIAMOND**

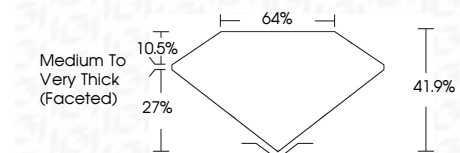
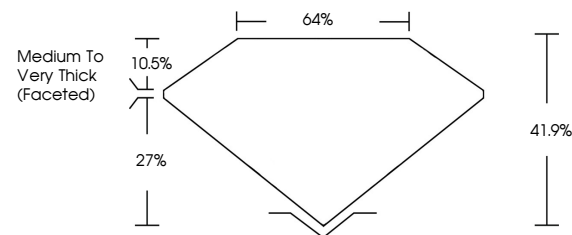
Shape and Cutting Style **OVAL ROSE CUT**
Measurements **20.61 X 13.97 X 5.86 MM**

GRADING RESULTS
Carat Weight **15.34 CARATS**
Color Grade **G**
Clarity Grade **VVS 2**

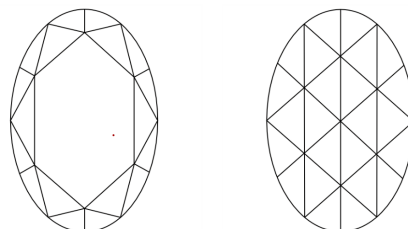


Sample Image Used

PROPORTIONS



CLARITY CHARACTERISTICS



KEY TO SYMBOLS

Red symbols indicate internal characteristics.
Green symbols indicate external characteristics.

COLOR

D E F G H I J Faint Very Light Light

CLARITY

IF	VS ¹⁻²	VS ¹⁻²	SI ¹⁻²	I ¹⁻³
Internally Flawless	Very Very Slightly Included	Very Slightly Included	Slightly Included	Included

ADDITIONAL GRADING INFORMATION

Polish **EXCELLENT**
Symmetry **EXCELLENT**
Fluorescence **NONE**
Inscription(s) **IGI LG724594278**
Comments: This Laboratory Grown Diamond was created by Chemical Vapor Deposition (CVD) growth process.
Type IIa



July 30, 2025
IGI Report No LG724594278
OVAL ROSE CUT
15.34 CARATS
Color Grade G
Clarity Grade VVS 2
Depth 41.9%
Table 64%
Girdle Medium to Very Thick (Faceted)
Culet EXCELLENT
Polish EXCELLENT
Symmetry EXCELLENT
Fluorescence NONE
Inscription(s) IGI LG724594278
Comments: This Laboratory Grown Diamond was created by Chemical Vapor Deposition (CVD) growth process.
Type IIa