



ELECTRONIC COPY

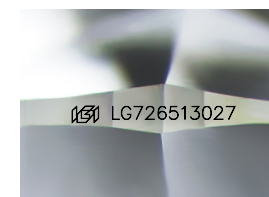
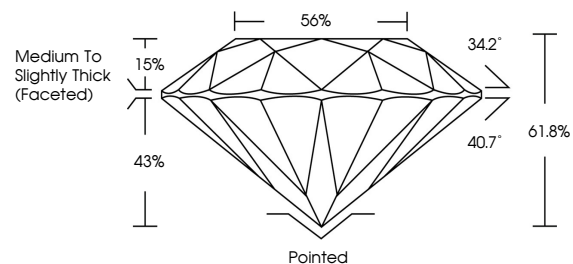
LG726513027
Report verification at igi.org



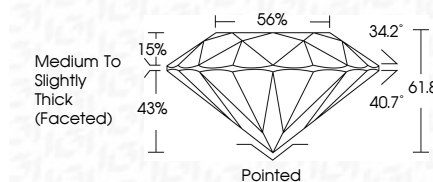
July 29, 2025
IGI Report Number **LG726513027**
Description **LABORATORY GROWN DIAMOND**
Shape and Cutting Style **ROUND BRILLIANT**
Measurements **10.47 - 10.51 X 6.48 MM**
GRADING RESULTS
Carat Weight **4.41 CARATS**
Color Grade **F**
Clarity Grade **VS 1**
Cut Grade **IDEAL**

July 29, 2025
IGI Report Number **LG726513027**
Description **LABORATORY GROWN DIAMOND**
Shape and Cutting Style **ROUND BRILLIANT**
Measurements **10.47 - 10.51 X 6.48 MM**
GRADING RESULTS
Carat Weight **4.41 CARATS**
Color Grade **F**
Clarity Grade **VS 1**
Cut Grade **IDEAL**

PROPORTIONS



Sample Image Used



ADDITIONAL GRADING INFORMATION
Polish **EXCELLENT**
Symmetry **EXCELLENT**
Fluorescence **NONE**
Inscription(s) **IGI LG726513027**

Comments: This Laboratory Grown Diamond was created by Chemical Vapor Deposition (CVD) growth process. Type IIa

COLOR

D E F G H I J Faint Very Light Light

CLARITY

IF	VS ¹⁻²	VS ¹⁻²	SI ¹⁻²	I ¹⁻³
Internally Flawless	Very Very Slightly Included	Very Slightly Included	Slightly Included	Included

ADDITIONAL GRADING INFORMATION

Polish **EXCELLENT**
Symmetry **EXCELLENT**
Fluorescence **NONE**
Inscription(s) **IGI LG726513027**
Comments: This Laboratory Grown Diamond was created by Chemical Vapor Deposition (CVD) growth process. Type IIa



IGI



July 29, 2025
IGI Report No LG726513027
ROUND BRILLIANT
10.47 - 10.51 X 6.48 MM
4.41 CARATS
F
VS 1
IDEAL
61.8%
56%
Medium To Slightly Thick (Faceted)
Pointed
EXCELLENT
EXCELLENT
NONE
IGI LG726513027
Comments: This Laboratory Grown Diamond was created by Chemical Vapor Deposition (CVD) growth process. Type IIa