



**ELECTRONIC COPY**

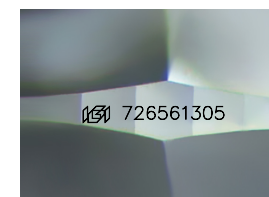
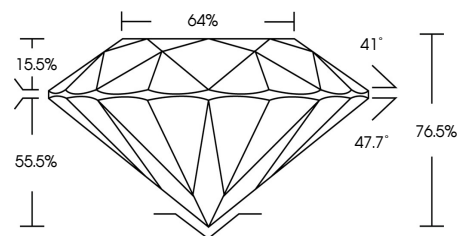
726561305  
Report verification at [igi.org](http://igi.org)



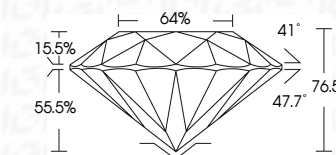
September 10, 2025  
IGI Report Number **726561305**  
Description **NATURAL DIAMOND**  
Shape and Cutting Style **ROUND BRILLIANT**  
Measurements **13.75 - 13.83 X 10.55 MM**  
**GRADING RESULTS**  
Carat Weight **12.67 CARATS**  
Color Grade **BLACK, TREATED COLOR**

September 10, 2025  
IGI Report Number **726561305**  
Description **NATURAL DIAMOND**  
Shape and Cutting Style **ROUND BRILLIANT**  
Measurements **13.75 - 13.83 X 10.55 MM**  
**GRADING RESULTS**  
Carat Weight **12.67 CARATS**  
Color Grade **BLACK, TREATED COLOR**  
**ADDITIONAL GRADING INFORMATION**  
Fluorescence **NONE**  
Inscription(s) **726561305**

**PROPORTIONS**



Sample Image Used



**COLOR**

D - F	G - J	K - M	N - R	S - Z	FANCY
Colorless	Near Colorless	Slightly Tinted	Very Light Color	Light Color	

**CLARITY**

IF	VVS <sup>1-2</sup>	VS <sup>1-2</sup>	SI <sup>1-2</sup>	I <sup>1-3</sup>
Internally Flawless	Very Very Slightly Included	Very Slightly Included	Slightly Included	Included

**ADDITIONAL GRADING INFORMATION**

Fluorescence **NONE**  
Inscription(s) **726561305**



**IGI**



September 10, 2025  
IGI Report No **726561305**  
**ROUND BRILLIANT**  
**13.75 - 13.83 X 10.55 MM**  
Carat Weight **12.67 CARATS**  
Color Grade **BLACK, TREATED COLOR**  
Depth **76.5%**  
Table **64%**  
Girdle  
Culet  
Fluorescence **NONE**  
Inscription(s) **726561305**