



ELECTRONIC COPY

LG726564590
Report verification at igi.org



August 13, 2025
IGI Report Number **LG726564590**
Description **LABORATORY GROWN DIAMOND**
Shape and Cutting Style **ROUND BRILLIANT**
Measurements **8.91 - 8.93 X 5.32 MM**
GRADING RESULTS
Carat Weight **2.60 CARATS**
Color Grade **FANCY INTENSE BLUE**
Clarity Grade **VS 1**
Cut Grade **EXCELLENT**

August 13, 2025
IGI Report Number **LG726564590**
Description **LABORATORY GROWN DIAMOND**
Shape and Cutting Style **ROUND BRILLIANT**
Measurements **8.91 - 8.93 X 5.32 MM**

GRADING RESULTS

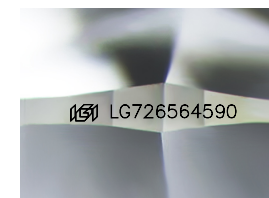
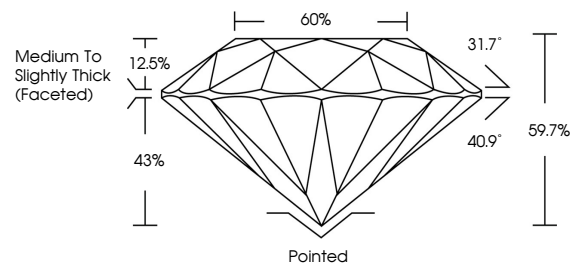
Carat Weight **2.60 CARATS**
Color Grade **FANCY INTENSE BLUE**
Clarity Grade **VS 1**
Cut Grade **EXCELLENT**

ADDITIONAL GRADING INFORMATION

Polish **EXCELLENT**
Symmetry **EXCELLENT**
Fluorescence **NONE**
Inscription(s) **IGI LG726564590**

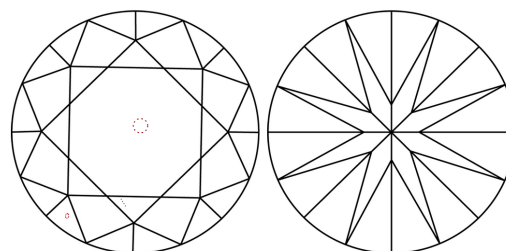
Comments: This Laboratory Grown Diamond was created by Chemical Vapor Deposition (CVD) growth process.
Indications of post-growth treatment.

PROPORTIONS



Sample Image Used

CLARITY CHARACTERISTICS



KEY TO SYMBOLS

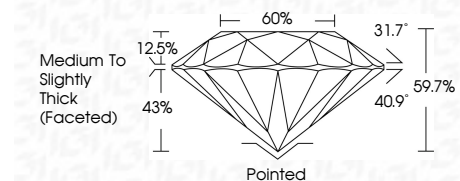
Red symbols indicate internal characteristics.
Green symbols indicate external characteristics.

COLOR

D E F G H I J Faint Very Light Light

CLARITY

IF	VS ¹⁻²	VS ¹⁻²	SI ¹⁻²	I ¹⁻³
Internally Flawless	Very Very Slightly Included	Very Slightly Included	Slightly Included	Included



ADDITIONAL GRADING INFORMATION

Polish **EXCELLENT**
Symmetry **EXCELLENT**
Fluorescence **NONE**
Inscription(s) **IGI LG726564590**
Comments: This Laboratory Grown Diamond was created by Chemical Vapor Deposition (CVD) growth process.
Indications of post-growth treatment.



August 13, 2025
IGI Report No **LG726564590**
ROUND BRILLIANT
8.91 - 8.93 X 5.32 MM
Carat Weight **2.60 CARATS**
Color Grade **FANCY INTENSE BLUE**
Clarity Grade **VS 1**
Cut Grade **EXCELLENT**
Depth **60%**
Table **Medium To Slightly Thick (Faceted)**
Girdle **Pointed**
Culet **EXCELLENT**
Polish **EXCELLENT**
Symmetry **EXCELLENT**
Fluorescence **NONE**
Inscriptions(s) **IGI LG726564590**
Comments: This Laboratory Grown Diamond was created by Chemical Vapor Deposition (CVD) growth process.
Indications of post-growth treatment.