



**ELECTRONIC COPY**

## LABORATORY GROWN DIAMOND REPORT

|                         |                          |
|-------------------------|--------------------------|
| August 6, 2025          |                          |
| IGI Report Number       | LG727519415              |
| Description             | LABORATORY GROWN DIAMOND |
| Shape and Cutting Style | ROUND BRILLIANT          |
| Measurements            | 6.42 - 6.47 X 3.97 MM    |

## GRADING RESULTS

|               |            |
|---------------|------------|
| Carat Weight  | 1.03 CARAT |
| Color Grade   | D          |
| Clarity Grade | VS 1       |
| Cut Grade     | VERY GOOD  |

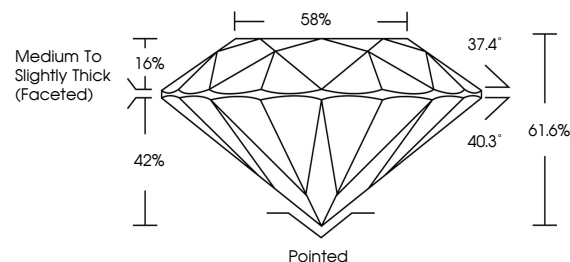
### ADDITIONAL GRADING INFORMATION

|                |                            |
|----------------|----------------------------|
| Polish         | VERY GOOD                  |
| Symmetry       | VERY GOOD                  |
| Fluorescence   | NONE                       |
| Inscription(s) | <del>151</del> LG727519415 |

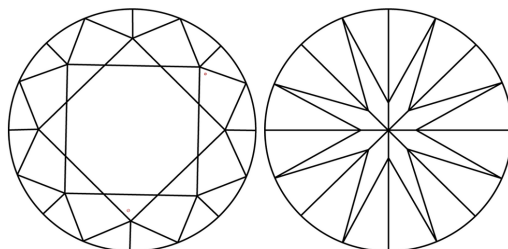
Comments: As Grown - No indication of post-growth treatment.  
This Laboratory Grown Diamond was created by High Pressure High Temperature (HPHT) growth process.  
Type II

LG727519415  
Report verification at [lgi.org](https://lgi.org)

## PROPORTIONS

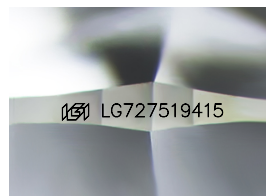


## CLARITY CHARACTERISTICS



## KEY TO SYMBOLS

Red symbols indicate internal characteristics.  
Green symbols indicate external characteristics.



Sample Image Used

## COLOR

D E F G H I J Faint Very Light Light

## CLARITY

IF WS<sup>1-2</sup> VS<sup>1-2</sup> SI<sup>1-2</sup> | 1-3

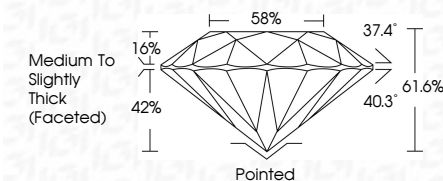
|                        |                                |                           |                      |          |
|------------------------|--------------------------------|---------------------------|----------------------|----------|
| Internally<br>Flawless | Very Very<br>Slightly Included | Very<br>Slightly Included | Slightly<br>Included | Included |
|------------------------|--------------------------------|---------------------------|----------------------|----------|



|                         |                          |
|-------------------------|--------------------------|
| August 6, 2025          |                          |
| IGI Report Number       | LG727519415              |
| Description             | LABORATORY GROWN DIAMOND |
| Shape and Cutting Style | ROUND BRILLIANT          |
| Measurements            | 6.42 - 6.47 X 3.97 MM    |

## GRADING RESULTS

|               |            |
|---------------|------------|
| Carat Weight  | 1.03 CARAT |
| Color Grade   | D          |
| Clarity Grade | VS 1       |
| Cut Grade     | VERY GOOD  |



### ADDITIONAL GRADING INFORMATION

|  |  |
|--|--|
| Polish   | VERY GOOD  |
| Symmetry   | VERY GOOD  |
| Fluorescence   | NONE   |
| Inscription(s)   | <del>(G)</del> LG727519415                         |
| Comments:  | As Grown - No indication of post-growth treatment. |
| This Laboratory Grown Diamond was created by High Pressure High Temperature (HPHT) growth process. |  |
| Type II  |  |



© IGI 2020, International Gemological Institute

FD - 10 20

**www.igi.org**



THIS DOCUMENT WAS PRODUCED WITH THE FOLLOWING SECURITY MEASURES: SPECIAL DOCUMENT PAPER, INK SCREENS, WATERMARK BACKGROUND DESIGNS, HOLOGRAM AND OTHER SECURITY FEATURES NOT LISTED AND DO EXCEED DOCUMENT SECURITY INDUSTRY GUIDELINES

|                                 |   |
|---------------------------------|---|
| <b>August 6, 2025</b>           | <b>1.08 CARAT</b>                         |
| <b>GJ Report No GZ727519415</b> | <b>D</b>                                  |
| <b>ROUND BRILLIANT</b>          | <b>VS 1</b>                               |
|                                 | <b>VERY GOOD</b>                          |
|                                 | <b>61.5%</b>                              |
|                                 | <b>55%</b>                                |
|                                 | <b>Medium To Slightly Thick (Faceted)</b> |
|                                 | <b>Painted</b>                            |
|                                 | <b>VERY GOOD</b>                          |
|                                 | <b>VERY GOOD</b>                          |
|                                 | <b>NONE</b>                               |
|                                 | <b>(#) GZ727519415</b>                    |

**Comments:** As Grown - No indication of post-growth treatment.

This Laboratory Growth Diamond was created by High Pressure High Temperature (HPHT) growth process.