

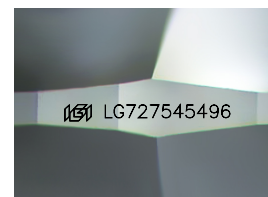
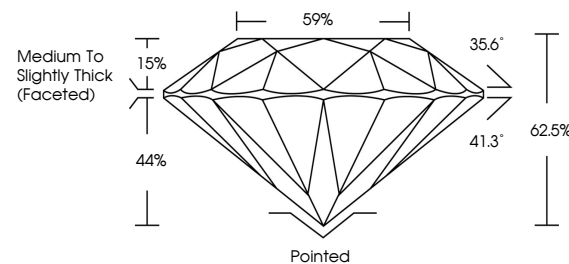


ELECTRONIC COPY

LABORATORY GROWN DIAMOND REPORT

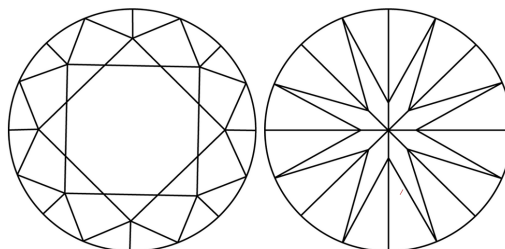
LG727545496
Report verification at igi.org

PROPORTIONS



Sample Image Used

CLARITY CHARACTERISTICS



KEY TO SYMBOLS

Red symbols indicate internal characteristics.
Green symbols indicate external characteristics.

COLOR

D E F G H I J Faint Very Light Light

CLARITY

IF WS¹⁻² VS¹⁻² SI¹⁻² |¹⁻³

Internally Flawless	Very Very Slightly Included	Very Slightly Included	Slightly Included	Included
------------------------	--------------------------------	---------------------------	----------------------	----------



© IGI 2020, International Gemological Institute

FD - 10 20

www.igi.org

LABORATORY GROWN DIAMOND REPORT



August 8, 2025

IGI Report Number **LG727545496**

Description	LABORATORY GROWN DIAMOND
-------------	--------------------------

Shape and Cutting Style **ROUND BRILLIANT**

Measurements 6.75 - 6.79 X 4.23 MM

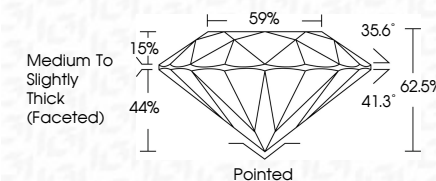
GRADING RESULTS

Carat Weight **1.21 CARAT**

Color Grade	E
-------------	---

Clarity Grade VS 1

Cut Grade **IDEAL**



ADDITIONAL GRADING INFORMATION

Polish **EXCELLENT**Symmetry **EXCELLENT**Fluorescence **NONE**Inscription(s) LG727545496

Comments: As Grown - No indication of post-growth treatment.

This Laboratory Grown Diamond was created by High Pressure High Temperature (HPHT) growth process.



August 8, 2026	Q1 Report No LG727546496	1.21 CARAT	Vs1 E	<p>Medium To Slightly Thick (Faceted)</p> <p>95%</p> <p>Pointed EXCELLENT EXCELLENT NONE</p> <p>681 LG727546496</p>
SI GOLD BRILLIANT	Carat Weight	Color Grade	IDEAL	
4.75 - 4.79 X 4.23 MM	Clarity Grade	Cut Grade	62.5%	
	Table	Depth		
	Girdle	Culet		
		Polish		
		Symmetry		
		Fluorescence		
		Inscriptions(s)		

Comments:

SI Green - No indication of post-growth treatment

This Laboratory Growth Diamond was created by High Pressure High Temperature (HPHT) growth process.

Type II