



ELECTRONIC COPY

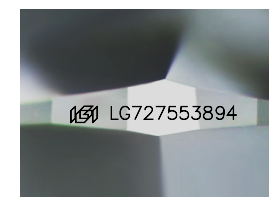
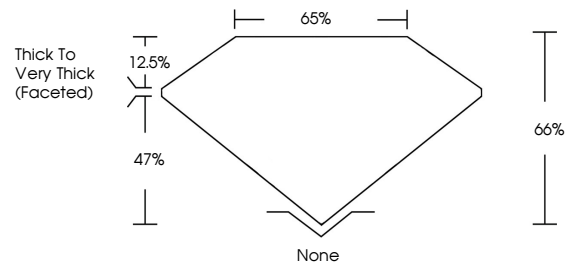
LG727553894
Report verification at igi.org



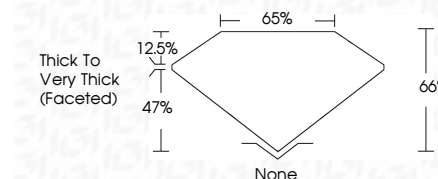
August 12, 2025
IGI Report Number **LG727553894**
Description **LABORATORY GROWN DIAMOND**
Shape and Cutting Style **SQUARE CUSHION MODIFIED BRILLIANT**
Measurements **6.43 X 6.44 X 4.25 MM**
GRADING RESULTS
Carat Weight **1.69 CARAT**
Color Grade **FANCY VIVID PINK**
Clarity Grade **VS 1**

August 12, 2025
IGI Report Number **LG727553894**
Description **LABORATORY GROWN DIAMOND**
Shape and Cutting Style **SQUARE CUSHION MODIFIED BRILLIANT**
Measurements **6.43 X 6.44 X 4.25 MM**
GRADING RESULTS
Carat Weight **1.69 CARAT**
Color Grade **FANCY VIVID PINK**
Clarity Grade **VS 1**

PROPORTIONS



Sample Image Used



ADDITIONAL GRADING INFORMATION

Polish **EXCELLENT**
Symmetry **EXCELLENT**
Fluorescence **STRONG**
Inscription(s) **IGI LG727553894**

Comments: This Laboratory Grown Diamond was created by Chemical Vapor Deposition (CVD) growth process. Indications of post-growth treatment.

COLOR

D E F G H I J Faint Very Light Light

CLARITY

| IF | VS ¹⁻² | VS ¹⁻² | SI ¹⁻² | I ¹⁻³ |
|---------------------|-----------------------------|------------------------|-------------------|------------------|
| Internally Flawless | Very Very Slightly Included | Very Slightly Included | Slightly Included | Included |

ADDITIONAL GRADING INFORMATION

Polish **EXCELLENT**
Symmetry **EXCELLENT**
Fluorescence **STRONG**
Inscription(s) **IGI LG727553894**
Comments: This Laboratory Grown Diamond was created by Chemical Vapor Deposition (CVD) growth process. Indications of post-growth treatment.



August 12, 2025
IGI Report No **LG727553894**
SQUARE CUSHION MODIFIED BRILLIANT
6.43 X 6.44 X 4.25 MM
Carat Weight **1.69 CARAT**
Color Grade **FANCY VIVID PINK**
Clarity Grade **VS 1**
Depth **66%**
Table **65%**
Girdle **Thick to Very Thick (Faceted)**
Culet **None**
Polish **EXCELLENT**
Symmetry **EXCELLENT**
Fluorescence **STRONG**
Inscription(s) **IGI LG727553894**
Comments: This Laboratory Grown Diamond was created by Chemical Vapor Deposition (CVD) growth process. Indications of post-growth treatment.