



**ELECTRONIC COPY**

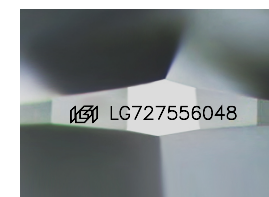
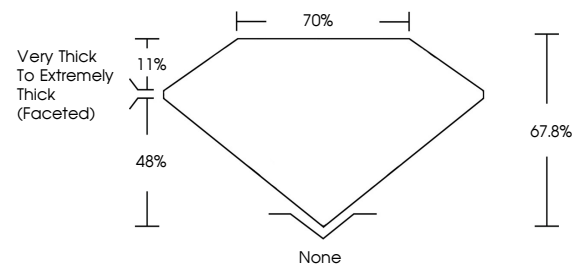
LG727556048  
Report verification at igi.org



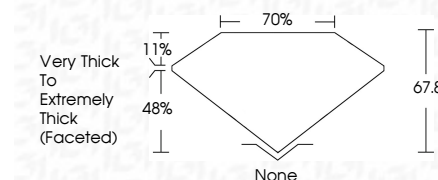
August 12, 2025  
IGI Report Number **LG727556048**  
Description **LABORATORY GROWN DIAMOND**  
Shape and Cutting Style **SQUARE CUSHION MODIFIED BRILLIANT**  
Measurements **7.04 X 7.02 X 4.76 MM**  
**GRADING RESULTS**  
Carat Weight **2.25 CARATS**  
Color Grade **FANCY INTENSE PINK**  
Clarity Grade **VVS 2**

August 12, 2025  
IGI Report Number **LG727556048**  
Description **LABORATORY GROWN DIAMOND**  
Shape and Cutting Style **SQUARE CUSHION MODIFIED BRILLIANT**  
Measurements **7.04 X 7.02 X 4.76 MM**  
**GRADING RESULTS**  
Carat Weight **2.25 CARATS**  
Color Grade **FANCY INTENSE PINK**  
Clarity Grade **VVS 2**

**PROPORTIONS**



Sample Image Used



**ADDITIONAL GRADING INFORMATION**

Polish **EXCELLENT**  
Symmetry **EXCELLENT**  
Fluorescence **STRONG**  
Inscription(s) **IGI LG727556048**

Comments: This Laboratory Grown Diamond was created by Chemical Vapor Deposition (CVD) growth process.  
Indications of post-growth treatment.

Secondary color: Orange

**COLOR**

D E F G H I J Faint Very Light Light

**CLARITY**

IF	VS <sup>1-2</sup>	VS <sup>1-2</sup>	SI <sup>1-2</sup>	I <sup>1-3</sup>
Internally Flawless	Very Very Slightly Included	Very Slightly Included	Slightly Included	Included

**ADDITIONAL GRADING INFORMATION**

Polish **EXCELLENT**  
Symmetry **EXCELLENT**  
Fluorescence **STRONG**  
Inscription(s) **IGI LG727556048**  
Comments: This Laboratory Grown Diamond was created by Chemical Vapor Deposition (CVD) growth process.  
Indications of post-growth treatment.  
Secondary color: Orange



August 12, 2025  
IGI Report No LG727556048  
**SQUARE CUSHION MODIFIED BRILLIANT**  
7.04 X 7.02 X 4.76 MM  
2.25 CARATS  
FANCY INTENSE PINK  
VVS 2  
67.8%  
70%  
Very Thick to Extremely Thick (Faceted)  
None  
EXCELLENT  
EXCELLENT  
STRONG  
IGI LG727556048

Comments: This Laboratory Grown Diamond was created by Chemical Vapor Deposition (CVD) growth process.  
Indications of post-growth treatment.  
Secondary color: Orange