



ELECTRONIC COPY

DIAMOND REPORT

| | |
|-------------------------|-----------------------|
| September 11, 2025 | |
| IGI Report Number | 727565763 |
| Description | NATURAL DIAMOND |
| Shape and Cutting Style | ROUND BRILLIANT |
| Measurements | 8.90 - 8.98 X 5.60 MM |

GRADING RESULTS

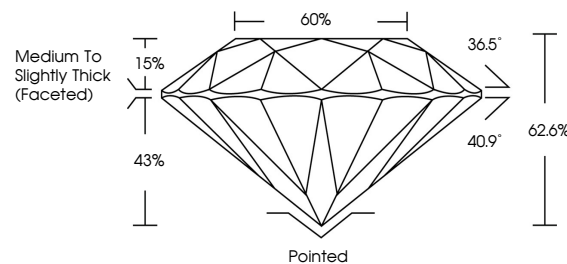
| | |
|---------------|---------------------|
| Carat Weight | 2.83 CARATS |
| Color Grade | I |
| Clarity Grade | INTERNALLY FLAWLESS |
| Cut Grade | EXCELLENT |

ADDITIONAL GRADING INFORMATION

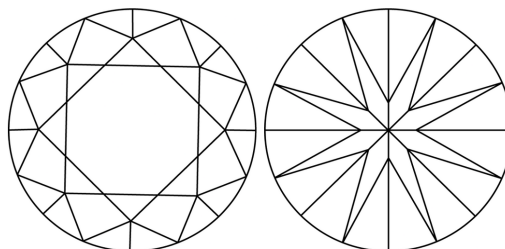
| | |
|----------------|---------------|
| Polish | EXCELLENT |
| Symmetry | EXCELLENT |
| Fluorescence | NONE |
| Inscription(s) | 131 727565763 |

727565763
Report verification at igi.org

PROPORTIONS

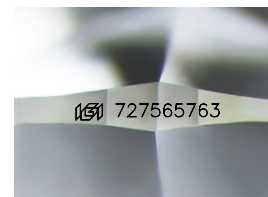


CLARITY CHARACTERISTICS



KEY TO SYMBOLS

Red symbols indicate internal characteristics.
Green symbols indicate external characteristics.



Sample Image Used

COLOR

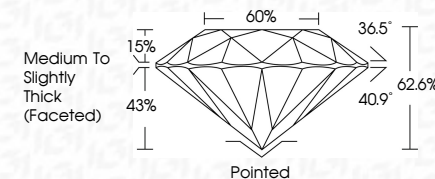
| D - F | G - J | K - M | N - R | S - Z | FANCY |
|-----------|----------------|-----------------|------------------|-------------|-------|
| Colorless | Near Colorless | Slightly Tinted | Very Light Color | Light Color | |

CLARITY

| IF | VVS ¹⁻² | VS ¹⁻² | SI ¹⁻² | I ¹⁻³ |
|---------------------|-----------------------------|------------------------|-------------------|------------------|
| Internally Flawless | Very Very Slightly Included | Very Slightly Included | Slightly Included | Included |



| | |
|-------------------------|-----------------------|
| September 11, 2025 | |
| IGI Report Number | 727565763 |
| Description | NATURAL DIAMOND |
| Shape and Cutting Style | ROUND BRILLIANT |
| Measurements | 8.90 - 8.98 X 5.60 MM |
| GRADING RESULTS | |
| Carat Weight | 2.83 CARATS |
| Color Grade | I |
| Clarity Grade | INTERNALLY FLAWLESS |
| Cut Grade | EXCELLENT |



ADDITIONAL GRADING INFORMATION

| | |
|----------------|--------------------------|
| Polish | EXCELLENT |
| Symmetry | EXCELLENT |
| Fluorescence | NONE |
| Inscription(s) | 163 727565763 |



© IGI 2020, International Gemological Institute

FD - 10 20



THIS DOCUMENT WAS PRODUCED WITH THE FOLLOWING SECURITY MEASURES: SPECIAL DOCUMENT PAPER, INK SCREENS, WATERMARK, BACKGROUND DESIGNS, HOLOGRAM AND OTHER SECURITY FEATURES NOT LISTED AND DO EXCEED DOCUMENT SECURITY INDUSTRY GUIDELINE

www.igi.org

September 11, 2025
GI Report No 727565763
ROUND BRILLIANT

| | | |
|-----------------------|---------------|------------------------------------|
| 9.90 - 8.98 X 5.60 MM | Conat Weight | 2.88 CARATS |
| | Color Grade | I |
| | Clarity Grade | IF |
| | Cut Grade | EXCELLENT |
| | Depth | 62.6% |
| | Table | 60% |
| | Grade | Medium To Slightly Thick (Faceted) |
| | Culet | Pointed |
| | Polish | EXCELLENT |
| | Symmetry | EXCELLENT |
| | Fluorescence | NONE |
| | Reference(s) | see 77656753 |