



ELECTRONIC COPY

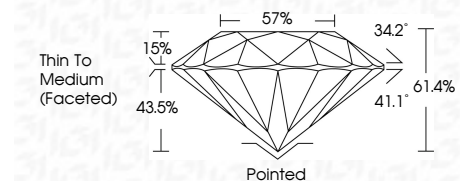
LG728515103
Report verification at igi.org



August 13, 2025
IGI Report Number LG728515103
Description LABORATORY GROWN DIAMOND
Shape and Cutting Style ROUND BRILLIANT
Measurements 13.37 - 13.45 X 8.24 MM

GRADING RESULTS

Carat Weight 8.95 CARATS
Color Grade F
Clarity Grade VS 1
Cut Grade IDEAL

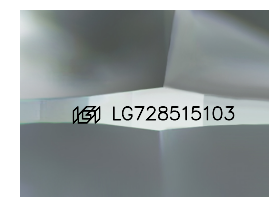


ADDITIONAL GRADING INFORMATION

Polish EXCELLENT
Symmetry EXCELLENT
Fluorescence NONE
Inscription(s) LG728515103
Comments: HEARTS & ARROWS
This Laboratory Grown Diamond was created by Chemical Vapor Deposition (CVD) growth process. Type IIa

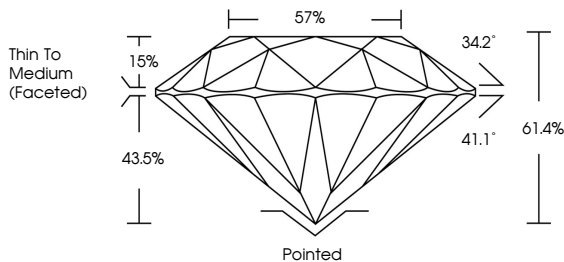


August 13, 2025
IGI Report No LG728515103
ROUND BRILLIANT
13.37 - 13.45 X 8.24 MM
8.95 CARATS
F
VS 1
IDEAL
61.4%
57%
Thin To Medium (Faceted)
Pointed
EXCELLENT
EXCELLENT
NONE
IGI LG728515103
Comments: HEARTS & ARROWS
This Laboratory Grown Diamond was created by Chemical Vapor Deposition (CVD) growth process. Type IIa

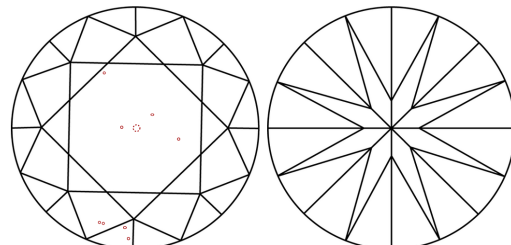


Sample Image Used

PROPORTIONS



CLARITY CHARACTERISTICS



KEY TO SYMBOLS

Red symbols indicate internal characteristics.
Green symbols indicate external characteristics.



COLOR

Table with columns D, E, F, G, H, I, J and values Faint, Very Light, Light

CLARITY

Table with columns IF, VS 1-2, VS 1-2, SI 1-2, I 1-3 and values Internally Flawless, Very Very Slightly Included, Very Slightly Included, Slightly Included, Included



August 13, 2025
IGI Report Number LG728515103
Description LABORATORY GROWN DIAMOND
Shape and Cutting Style ROUND BRILLIANT
Measurements 13.37 - 13.45 X 8.24 MM

GRADING RESULTS

Carat Weight 8.95 CARATS
Color Grade F
Clarity Grade VS 1
Cut Grade IDEAL

ADDITIONAL GRADING INFORMATION

Polish EXCELLENT
Symmetry EXCELLENT
Fluorescence NONE
Inscription(s) LG728515103

Comments: HEARTS & ARROWS
This Laboratory Grown Diamond was created by Chemical Vapor Deposition (CVD) growth process. Type IIa