



ELECTRONIC COPY

728551370
Report verification at igi.org

DIAMOND REPORT

September 5, 2025
IGI Report Number **728551370**
Description **NATURAL DIAMOND**
Shape and Cutting Style **EMERALD CUT**
Measurements **8.20 X 5.79 X 4.07 MM**

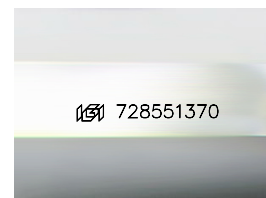
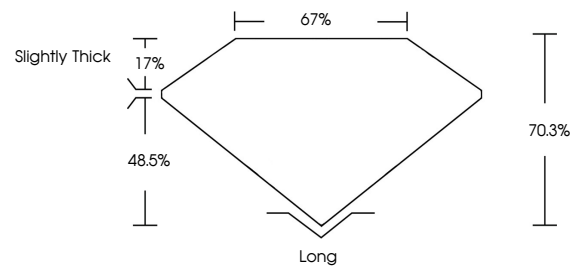
GRADING RESULTS

Carat Weight **2.03 CARATS**
Color Grade **J**
Clarity Grade **VVS 1**
Cut Grade **VERY GOOD**

ADDITIONAL GRADING INFORMATION

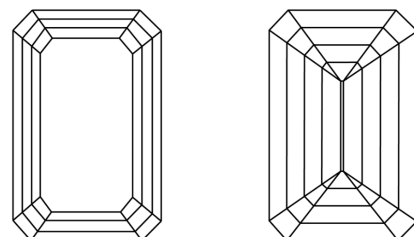
Polish **EXCELLENT**
Symmetry **EXCELLENT**
Fluorescence **VERY SLIGHT**
Inscription(s) **728551370**

PROPORTIONS



Sample Image Used

CLARITY CHARACTERISTICS



KEY TO SYMBOLS

Red symbols indicate internal characteristics.
Green symbols indicate external characteristics.

COLOR

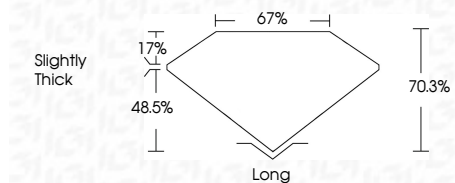
D - F	G - J	K - M	N - R	S - Z	FANCY
Colorless	Near Colorless	Slightly Tinted	Very Light Color	Light Color	

CLARITY

IF	VVS ¹⁻²	VS ¹⁻²	SI ¹⁻²	I ¹⁻³
Internally Flawless	Very Very Slightly Included	Very Slightly Included	Slightly Included	Included



September 5, 2025
IGI Report Number **728551370**
Description **NATURAL DIAMOND**
Shape and Cutting Style **EMERALD CUT**
Measurements **8.20 X 5.79 X 4.07 MM**
GRADING RESULTS
Carat Weight **2.03 CARATS**
Color Grade **J**
Clarity Grade **VVS 1**
Cut Grade **VERY GOOD**



ADDITIONAL GRADING INFORMATION

Polish **EXCELLENT**
Symmetry **EXCELLENT**
Fluorescence **VERY SLIGHT**
Inscription(s) **728551370**



IGI



September 5, 2025
IGI Report No 728551370
EMERALD CUT

2.03 CARATS
Carat Weight **J**
Color Grade **VERY GOOD**
Clarity Grade **VVS 1**
Depth **70.3%**
Table **67%**
Girdle **Slightly Thick**

Long **EXCELLENT**
Polish **EXCELLENT**
Symmetry **EXCELLENT**
Fluorescence **VERY SLIGHT**
Inscription(s) **728551370**