



**ELECTRONIC COPY**

728551695  
Report verification at [igi.org](http://igi.org)



September 12, 2025  
IGI Report Number **728551695**  
Description **NATURAL DIAMOND**  
Shape and Cutting Style **SQUARE EMERALD CUT**  
Measurements **5.86 X 5.82 X 4.12 MM**  
**GRADING RESULTS**  
Carat Weight **1.32 CARAT**  
Color Grade **G**  
Clarity Grade **INTERNALLY FLAWLESS**  
Cut Grade **VERY GOOD**

**DIAMOND REPORT**

September 12, 2025  
IGI Report Number **728551695**  
Description **NATURAL DIAMOND**  
Shape and Cutting Style **SQUARE EMERALD CUT**  
Measurements **5.86 X 5.82 X 4.12 MM**

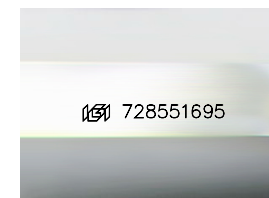
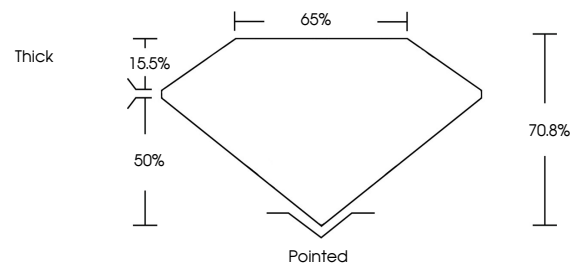
**GRADING RESULTS**

Carat Weight **1.32 CARAT**  
Color Grade **G**  
Clarity Grade **INTERNALLY FLAWLESS**  
Cut Grade **VERY GOOD**

**ADDITIONAL GRADING INFORMATION**

Polish **EXCELLENT**  
Symmetry **EXCELLENT**  
Fluorescence **NONE**  
Inscription(s) **728551695**

**PROPORTIONS**



Sample Image Used

**CLARITY CHARACTERISTICS**



**KEY TO SYMBOLS**

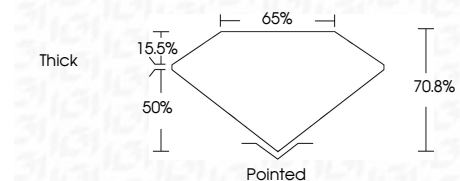
Red symbols indicate internal characteristics.  
Green symbols indicate external characteristics.

**COLOR**

D - F	G - J	K - M	N - R	S - Z	FANCY
Colorless	Near Colorless	Slightly Tinted	Very Light Color	Light Color	

**CLARITY**

IF	VVS <sup>1-2</sup>	VS <sup>1-2</sup>	SI <sup>1-2</sup>	I <sup>1-3</sup>
Internally Flawless	Very Very Slightly Included	Very Slightly Included	Slightly Included	Included



**ADDITIONAL GRADING INFORMATION**

Polish **EXCELLENT**  
Symmetry **EXCELLENT**  
Fluorescence **NONE**  
Inscription(s) **728551695**



**IGI**



September 12, 2025  
IGI Report No. 728551695  
**SQUARE EMERALD CUT**  
5.86 X 5.82 X 4.12 MM  
1.32 CARAT  
G  
LF  
VERY GOOD  
70.8%  
65%  
Thick  
Pointed  
EXCELLENT  
EXCELLENT  
NONE  
NONE  
 728551695