



ELECTRONIC COPY

DIAMOND REPORT

September 12, 2025
IGI Report Number **728551753**
Description **NATURAL DIAMOND**
Shape and Cutting Style **SQUARE EMERALD CUT**
Measurements **5.59 X 5.53 X 3.71 MM**

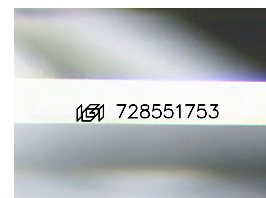
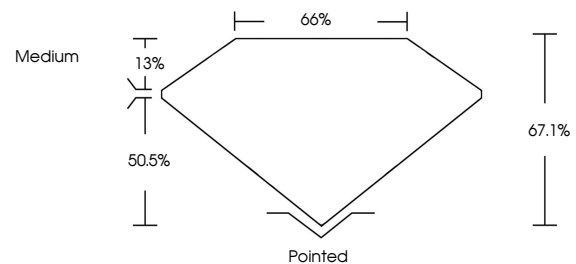
GRADING RESULTS

Carat Weight **1.02 CARAT**
Color Grade **G**
Clarity Grade **VS 2**
Cut Grade **VERY GOOD**

ADDITIONAL GRADING INFORMATION

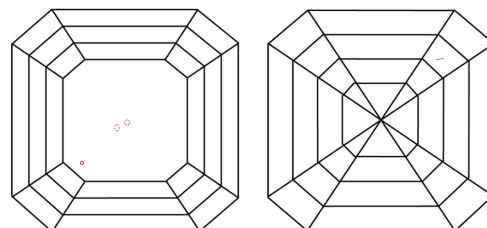
Polish **EXCELLENT**
Symmetry **EXCELLENT**
Fluorescence **NONE**
Inscription(s) **IGI 728551753**

PROPORTIONS



Sample Image Used

CLARITY CHARACTERISTICS



KEY TO SYMBOLS

Red symbols indicate internal characteristics.
Green symbols indicate external characteristics.

COLOR

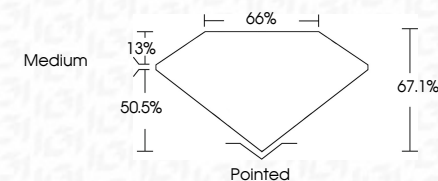
D - F	G - J	K - M	N - R	S - Z	FANCY
Colorless	Near Colorless	Slightly Tinted	Very Light Color	Light Color	

CLARITY

IF	VVS ¹⁻²	VS ¹⁻²	SI ¹⁻²	I ¹⁻³
Internally Flawless	Very Very Slightly Included	Very Slightly Included	Slightly Included	Included



September 12, 2025
IGI Report Number **728551753**
Description **NATURAL DIAMOND**
Shape and Cutting Style **SQUARE EMERALD CUT**
Measurements **5.59 X 5.53 X 3.71 MM**
GRADING RESULTS
Carat Weight **1.02 CARAT**
Color Grade **G**
Clarity Grade **VS 2**
Cut Grade **VERY GOOD**



ADDITIONAL GRADING INFORMATION

Polish **EXCELLENT**
Symmetry **EXCELLENT**
Fluorescence **NONE**
Inscription(s) **IGI 728551753**



IGI



September 12, 2025
IGI Report No 728551753
SQUARE EMERALD CUT
1.02 CARAT
Color Grade **G**
Clarity Grade **VS 2**
Depth **50.5%**
Table **13%**
Girdle **Medium**
Pointed
Polish **EXCELLENT**
Symmetry **EXCELLENT**
Fluorescence **NONE**
Inscriptions(s) **IGI 728551753**