



**ELECTRONIC COPY**

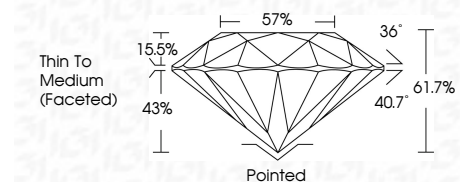
728551796  
Report verification at [igi.org](http://igi.org)



September 13, 2025  
IGI Report Number **728551796**  
Description **NATURAL DIAMOND**  
Shape and Cutting Style **ROUND BRILLIANT**  
Measurements **7.32 - 7.36 X 4.52 MM**

**GRADING RESULTS**

Carat Weight **1.50 CARAT**  
Color Grade **K**  
Clarity Grade **SI 2**  
Cut Grade **EXCELLENT**



**ADDITIONAL GRADING INFORMATION**

Polish **EXCELLENT**  
Symmetry **EXCELLENT**  
Fluorescence **NONE**  
Inscription(s) **IGI 728551796**  
Comments: IDEAL CUT ROUND BRILLIANT



September 13, 2025  
IGI Report No 728551796  
**ROUND BRILLIANT**  
7.32 - 7.36 X 4.52 MM  
1.50 CARAT  
K  
SI 2  
EXCELLENT  
61.7%  
57%  
Thin To Medium (Faceted)  
Pointed  
EXCELLENT  
EXCELLENT  
NONE  
IGI 728551796  
Comments: IDEAL CUT ROUND BRILLIANT

**DIAMOND REPORT**

September 13, 2025  
IGI Report Number **728551796**  
Description **NATURAL DIAMOND**  
Shape and Cutting Style **ROUND BRILLIANT**  
Measurements **7.32 - 7.36 X 4.52 MM**

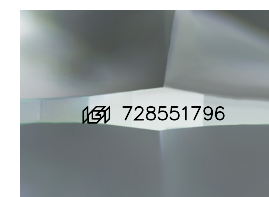
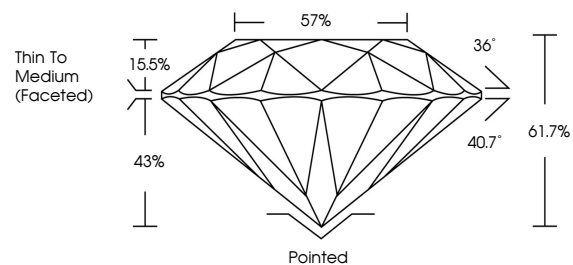
**GRADING RESULTS**

Carat Weight **1.50 CARAT**  
Color Grade **K**  
Clarity Grade **SI 2**  
Cut Grade **EXCELLENT**

**ADDITIONAL GRADING INFORMATION**

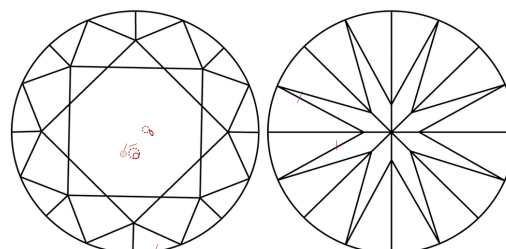
Polish **EXCELLENT**  
Symmetry **EXCELLENT**  
Fluorescence **NONE**  
Inscription(s) **IGI 728551796**  
Comments: IDEAL CUT ROUND BRILLIANT

**PROPORTIONS**



Sample Image Used

**CLARITY CHARACTERISTICS**



**KEY TO SYMBOLS**

Red symbols indicate internal characteristics.  
Green symbols indicate external characteristics.

**COLOR**

D - F	G - J	K - M	N - R	S - Z	FANCY
Colorless	Near Colorless	Slightly Tinted	Very Light Color	Light Color	

**CLARITY**

IF	VVS <sup>1-2</sup>	VS <sup>1-2</sup>	SI <sup>1-2</sup>	I <sup>1-3</sup>
Internally Flawless	Very Very Slightly Included	Very Slightly Included	Slightly Included	Included

