



**ELECTRONIC COPY**

LG728551993  
Report verification at igi.org



August 28, 2025  
IGI Report Number **LG728551993**  
Description **LABORATORY GROWN DIAMOND**  
Shape and Cutting Style **SQUARE CUSHION MODIFIED BRILLIANT**  
Measurements **15.40 X 15.36 X 9.18 MM**  
**GRADING RESULTS**  
Carat Weight **20.17 CARATS**  
Color Grade **FANCY VIVID BLUE**  
Clarity Grade **SI 1**

**LABORATORY GROWN DIAMOND REPORT**

August 28, 2025  
IGI Report Number **LG728551993**  
Description **LABORATORY GROWN DIAMOND**  
Shape and Cutting Style **SQUARE CUSHION MODIFIED BRILLIANT**  
Measurements **15.40 X 15.36 X 9.18 MM**

**GRADING RESULTS**

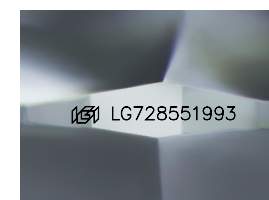
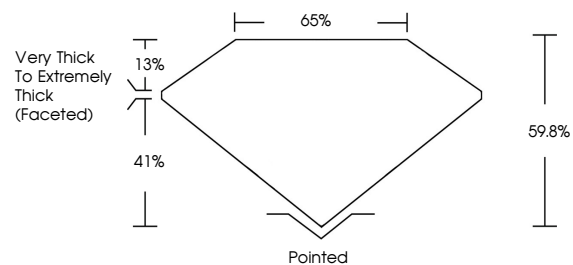
Carat Weight **20.17 CARATS**  
Color Grade **FANCY VIVID BLUE**  
Clarity Grade **SI 1**

**ADDITIONAL GRADING INFORMATION**

Polish **EXCELLENT**  
Symmetry **EXCELLENT**  
Fluorescence **NONE**  
Inscription(s) **IGI LG728551993**

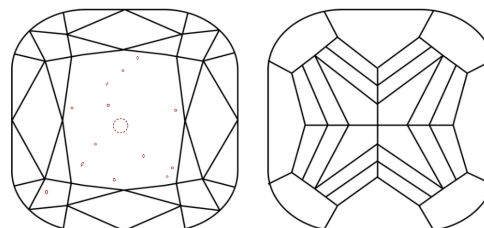
Comments: This Laboratory Grown Diamond was created by Chemical Vapor Deposition (CVD) growth process.  
Indications of post-growth treatment.

**PROPORTIONS**



Sample Image Used

**CLARITY CHARACTERISTICS**



**KEY TO SYMBOLS**

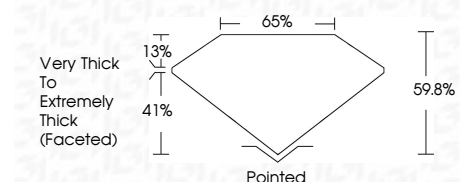
Red symbols indicate internal characteristics.  
Green symbols indicate external characteristics.

**COLOR**

D E F G H I J Faint Very Light Light

**CLARITY**

IF	VS <sup>1-2</sup>	VS <sup>1-2</sup>	SI <sup>1-2</sup>	I <sup>1-3</sup>
Internally Flawless	Very Very Slightly Included	Very Slightly Included	Slightly Included	Included



**ADDITIONAL GRADING INFORMATION**

Polish **EXCELLENT**  
Symmetry **EXCELLENT**  
Fluorescence **NONE**  
Inscription(s) **IGI LG728551993**  
Comments: This Laboratory Grown Diamond was created by Chemical Vapor Deposition (CVD) growth process.  
Indications of post-growth treatment.



August 28, 2025  
IGI Report No LG728551993  
**SQUARE CUSHION MODIFIED BRILLIANT**  
15.40 X 15.36 X 9.18 MM  
20.17 CARATS  
FANCY VIVID BLUE  
SI 1  
69.6%  
65%  
Very Thick to Extremely Thick (Faceted)  
Pointed  
EXCELLENT  
EXCELLENT  
NONE  
IGI LG728551993  
Comments: This Laboratory Grown Diamond was created by Chemical Vapor Deposition (CVD) growth process.  
Indications of post-growth treatment.