



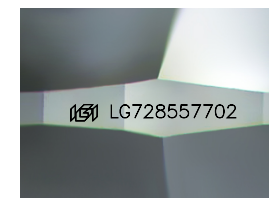
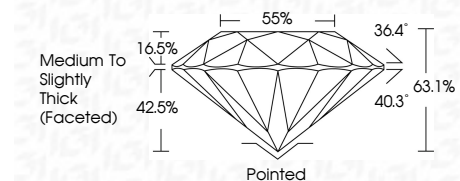
ELECTRONIC COPY

LG728557702
Report verification at igi.org



August 14, 2025
IGI Report Number LG728557702
Description LABORATORY GROWN DIAMOND
Shape and Cutting Style ROUND BRILLIANT
Measurements 10.02 - 10.08 X 6.35 MM

GRADING RESULTS
Carat Weight 4.02 CARATS
Color Grade F
Clarity Grade VVS 2
Cut Grade EXCELLENT

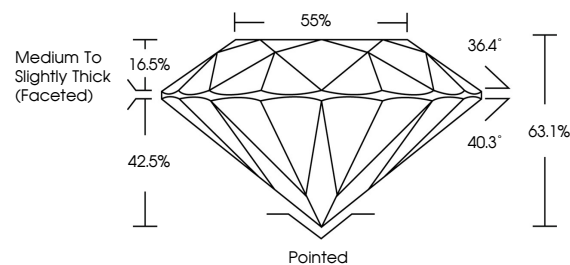


Sample Image Used

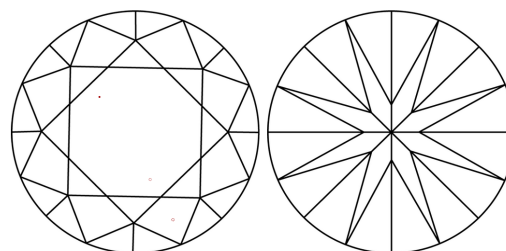
ADDITIONAL GRADING INFORMATION
Polish EXCELLENT
Symmetry EXCELLENT
Fluorescence NONE
Inscription(s) LG728557702
Comments: This Laboratory Grown Diamond was created by Chemical Vapor Deposition (CVD) growth process. Type IIa



PROPORTIONS



CLARITY CHARACTERISTICS



KEY TO SYMBOLS

Red symbols indicate internal characteristics.
Green symbols indicate external characteristics.

COLOR

D E F G H I J Faint Very Light Light

CLARITY

IF WS 1-2 VS 1-2 SI 1-2 I 1-3
Internally Flawless Very Very Slightly Included Very Slightly Included Slightly Included Included



August 14, 2025
IGI Report No LG728557702
ROUND BRILLIANT
10.02 - 10.08 X 6.35 MM
4.02 CARATS
Color Grade F
Clarity Grade VVS 2
Depth 63.1%
Table 55%
Girdle Medium To Slightly Thick (Faceted)
Culet Pointed
Polish EXCELLENT
Symmetry EXCELLENT
Fluorescence NONE
Inscription(s) IGI LG728557702
Comments: This Laboratory Grown Diamond was created by Chemical Vapor Deposition (CVD) growth process. Type IIa