

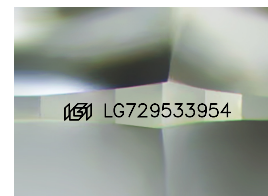
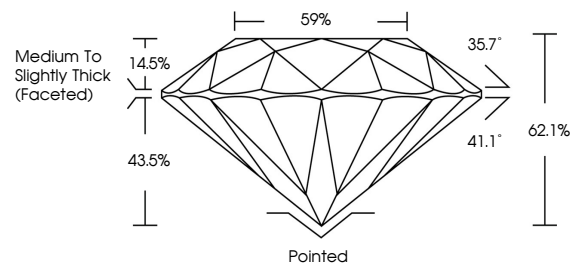


**ELECTRONIC COPY**

## LABORATORY GROWN DIAMOND REPORT

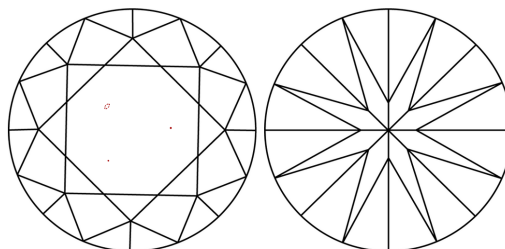
LG729533954  
Report verification at [igi.org](https://igi.org)

## PROPORTIONS



Sample Image Used

## CLARITY CHARACTERISTICS



### KEY TO SYMBOLS

Red symbols indicate internal characteristics.  
Green symbols indicate external characteristics.

## COLOR

D E F G H I J Faint Very Light Light

## CLARITY

IF WS<sup>1-2</sup> VS<sup>1-2</sup> SI<sup>1-2</sup> |<sup>1-3</sup>

Internally Flawless	Very Very Slightly Included	Very Slightly Included	Slightly Included	Included
------------------------	--------------------------------	---------------------------	----------------------	----------

## LABORATORY GROWN DIAMOND REPORT



September 15, 2025

IGI Report Number **LG729533954**Description **LABORATORY GROWN DIAMOND**Shape and Cutting Style **ROUND BRILLIANT**

Measurements 8.76 - 8.85 X 5.46 MM

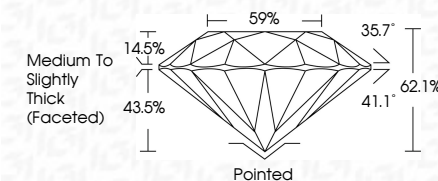
## GRADING RESULTS

Carat Weight **2.60 CARATS**

Color Grade E

Clarity Grade **VVS 2**

Cut Grade **EXCELLENT**



### ADDITIONAL GRADING INFORMATION

Polish **EXCELLENT**Symmetry **EXCELLENT**Fluorescence NONIInscription(s)  LG729533954

Comments: This Laboratory Grown Diamond was created by Chemical Vapor Deposition (CVD) growth process. Type IIa. Indications of post-growth treatment.



© IGI 2020, International Gemological Institute

FD - 10 20

**www.igi.org**

THIS DOCUMENT WAS PRODUCED WITH THE FOLLOWING SECURITY MEASURES: SPECIAL DOCUMENT PAPER, INK SCREENS, WATERMARK BACKGROUND DESIGNS, HOLOGRAM AND OTHER SECURITY FEATURES NOT LISTED AND DO EXCEED DOCUMENT SECURITY INDUSTRY GUIDELINES

September 15, 2025  
GI Report No LG729533954  
ROUND BRILLIANT

3.76 - 8.85 X 5.45 MM	2.60 CARATS	VVS 2	Pointed
Carat Weight		EXCELLENT	EXCELLENT
Color Grade		62.1%	NONE
Clarity Grade		59%	VERY SLIGHTLY
Cut Grade		Medium to slightly Thick (faceted)	EXCELLENT
Depth			EXCELLENT
Table			EXCELLENT
Girdle			EXCELLENT
Culet			EXCELLENT
Polish			EXCELLENT
Symmetry			EXCELLENT
Fluorescence			EXCELLENT

**Comments:**  
This Laboratory Grown Diamond was created by Chemical Vapor Deposition (CVD) growth process, Type IIa.