



ELECTRONIC COPY

LABORATORY GROWN DIAMOND REPORT

August 22, 2025	
IGI Report Number	LG729538313
Description	LABORATORY GROWN DIAMOND
Shape and Cutting Style	ROUND BRILLIANT
Measurements	6.75 - 6.78 X 4.21 MM

GRADING RESULTS

Carat Weight	1.20 CARAT
Color Grade	E
Clarity Grade	VVS 2
Cut Grade	IDEAL

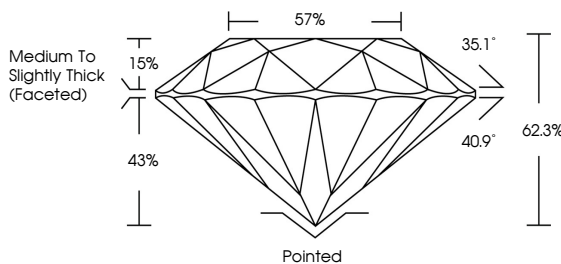
ADDITIONAL GRADING INFORMATION

Polish	EXCELLENT
Symmetry	EXCELLENT
Fluorescence	NONE
Inscription(s)	 LG729538313

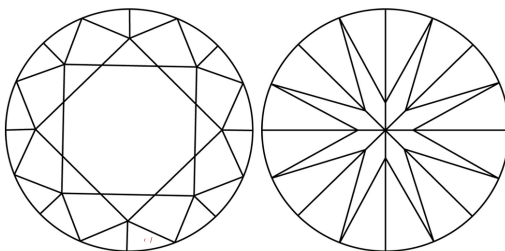
Comments: As Grown - No indication of post-growth treatment.
This Laboratory Grown Diamond was created by High Pressure High Temperature (HPHT) growth process.
Type II

LG729538313
Report verification at igi.org

PROPORTIONS

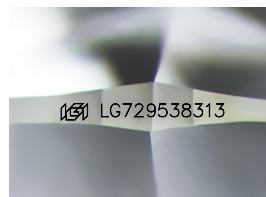


CLARITY CHARACTERISTICS



KEY TO SYMBOLS

Red symbols indicate internal characteristics.
Green symbols indicate external characteristics.



Sample Image Used

COLOR

D E F G H I J Faint Very Light Light

CLARITY

IF WS¹⁻² VS¹⁻² SI¹⁻² |¹⁻³

Internally Flawless	Very Very Slightly Included	Very Slightly Included	Slightly Included	Included
------------------------	--------------------------------	---------------------------	----------------------	----------

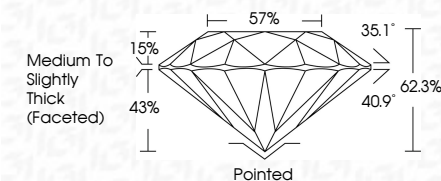
LABORATORY GROWN DIAMOND REPORT




August 22, 2025	
IGI Report Number	LG729538313
Description	LABORATORY GROWN DIAMOND
Shape and Cutting Style	ROUND BRILLIANT
Measurements	6.75 - 6.78 X 4.21 MM

GRADING RESULTS

Carat Weight	1.20 CARAT
Color Grade	E
Clarity Grade	VVS 2
Cut Grade	IDEAL



ADDITIONAL GRADING INFORMATION

Polish	EXCELLENT
Symmetry	EXCELLENT
Fluorescence	NONE
Inscription(s)	 LG729538313
Comments: As Grown - No indication of post-growth treatment.	
This Laboratory Grown Diamond was created by High Pressure High Temperature (HPHT) growth process.	
Type II	



IG



© IGI 2020, International Gemological Institute

FD - 10 20



THIS DOCUMENT WAS PRODUCED WITH THE FOLLOWING SECURITY MEASURES: SPECIAL DOCUMENT PAPER, INK SCREENS, WATERMARK BACKGROUND DESIGNS, HOLOGRAM AND OTHER SECURITY FEATURES NOT LISTED AND DO EXCEED DOCUMENT SECURITY INDUSTRY GUIDELINES

www.igi.org

August 22, 2025	1,20 CASAT
RG Report No. LG72938313	VWS 2
IGI Bellant	IDEAL
	62.5%
	57%
	Medium to slightly thick (slightly)
	Pointed
	EXCELLENT
	EXCELLENT
	NONE
	Ⓜ LG72938313
4.75 - 4.78 X 4.21 MM	
Color Weight	
Color Grade	
Clarify Grade	
Cut Grade	
Depth	
Table	
Grades	
Quiet	
Polish	
Symmetry	
Fluorescence	
Inclusions	
Comments:	
As Grown - No indication of post-growth treatment.	
The Lacking Growth Diamond was cut by High Pressure High Temperature (HPHT) growth process.	