



**ELECTRONIC COPY**

LG729572049  
Report verification at igi.org



February 17, 2026  
IGI Report Number **LG729572049**  
Description **LABORATORY GROWN DIAMOND**  
Shape and Cutting Style **OCTAGONAL MODIFIED BRILLIANT**  
Measurements **7.31 X 6.49 X 4.15 MM**  
**GRADING RESULTS**  
Carat Weight **1.49 CARAT**  
Color Grade **F**  
Clarity Grade **VVS 2**

February 17, 2026  
IGI Report Number **LG729572049**  
Description **LABORATORY GROWN DIAMOND**  
Shape and Cutting Style **OCTAGONAL MODIFIED BRILLIANT**  
Measurements **7.31 X 6.49 X 4.15 MM**

**GRADING RESULTS**

Carat Weight **1.49 CARAT**  
Color Grade **F**  
Clarity Grade **VVS 2**

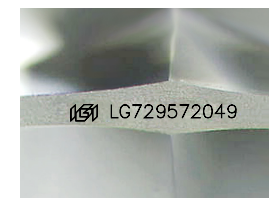
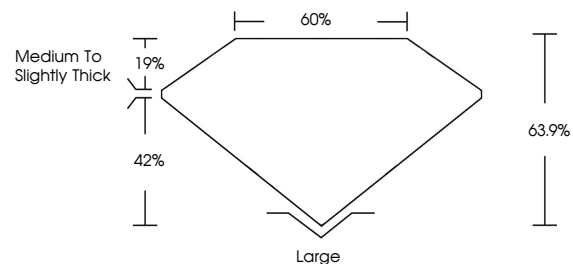
**ADDITIONAL GRADING INFORMATION**

Polish **VERY GOOD**  
Symmetry **VERY GOOD**  
Fluorescence **NONE**

Inscription(s) **IGI LG729572049**

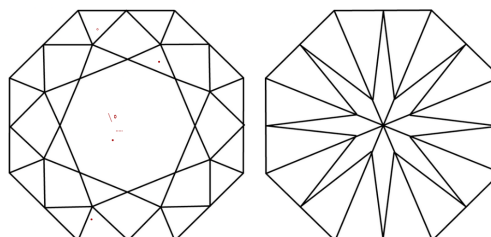
Comments: This Laboratory Grown Diamond was created by Chemical Vapor Deposition (CVD) growth process.  
Type IIa

**PROPORTIONS**



Sample Image Used

**CLARITY CHARACTERISTICS**



**KEY TO SYMBOLS**

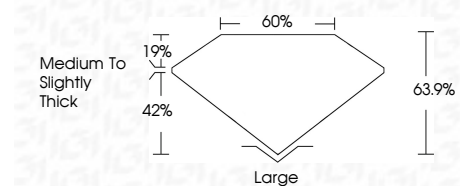
Red symbols indicate internal characteristics.  
Green symbols indicate external characteristics.

**COLOR**

D E F G H I J Faint Very Light Light

**CLARITY**

FL	IF	VVS <sup>1-2</sup>	VS <sup>1-2</sup>	SI <sup>1-2</sup>	I <sup>1-3</sup>
Flawless	Internally Flawless	Very Very Slightly Included	Very Slightly Included	Slightly Included	Included



**ADDITIONAL GRADING INFORMATION**

Polish **VERY GOOD**  
Symmetry **VERY GOOD**  
Fluorescence **NONE**  
Inscription(s) **IGI LG729572049**  
Comments: This Laboratory Grown Diamond was created by Chemical Vapor Deposition (CVD) growth process.  
Type IIa



**IGI**



February 17, 2026  
IGI Report No LG729572049  
OCTAGONAL MODIFIED BRILLIANT  
7.31 X 6.49 X 4.15 MM  
1.49 CARAT  
F  
VVS 2  
63.9%  
60%  
Medium to Slightly Thick  
Large  
VERY GOOD  
VERY GOOD  
NONE  
IGI LG729572049  
Comments: This Laboratory Grown Diamond was created by Chemical Vapor Deposition (CVD) growth process.  
Type IIa