



**ELECTRONIC COPY**

LG729572352  
Report verification at igi.org



September 8, 2025  
IGI Report Number **LG729572352**  
Description **LABORATORY GROWN DIAMOND**  
Shape and Cutting Style **SQUARE CUSHION MODIFIED BRILLIANT**  
Measurements **7.84 X 7.71 X 5.03 MM**  
**GRADING RESULTS**  
Carat Weight **2.61 CARATS**  
Color Grade **F**  
Clarity Grade **VVS 1**

September 8, 2025  
IGI Report Number **LG729572352**  
Description **LABORATORY GROWN DIAMOND**  
Shape and Cutting Style **SQUARE CUSHION MODIFIED BRILLIANT**  
Measurements **7.84 X 7.71 X 5.03 MM**

**GRADING RESULTS**

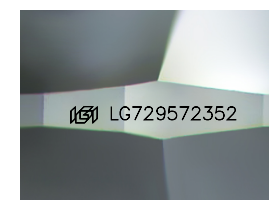
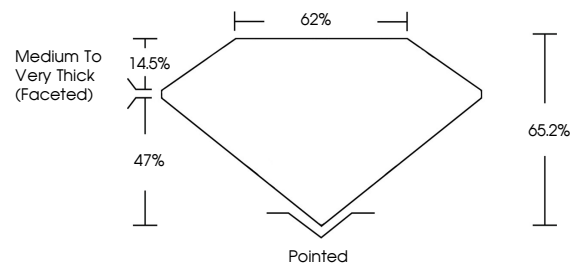
Carat Weight **2.61 CARATS**  
Color Grade **F**  
Clarity Grade **VVS 1**

**ADDITIONAL GRADING INFORMATION**

Polish **EXCELLENT**  
Symmetry **VERY GOOD**  
Fluorescence **NONE**  
Inscription(s) **(IGI) LG729572352**

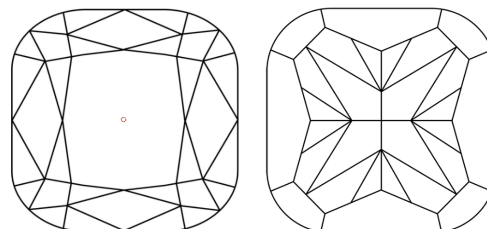
Comments: As Grown - No indication of post-growth treatment.  
This Laboratory Grown Diamond was created by High Pressure High Temperature (HPHT) growth process.  
Type II

**PROPORTIONS**



Sample Image Used

**CLARITY CHARACTERISTICS**



**KEY TO SYMBOLS**

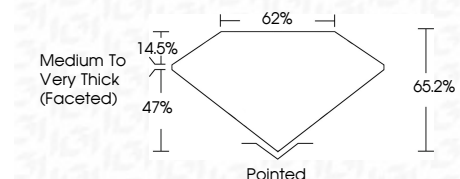
Red symbols indicate internal characteristics.  
Green symbols indicate external characteristics.

**COLOR**

D E F G H I J Faint Very Light Light

**CLARITY**

IF	VS <sup>1-2</sup>	VS <sup>1-2</sup>	SI <sup>1-2</sup>	I <sup>1-3</sup>
Internally Flawless	Very Very Slightly Included	Very Slightly Included	Slightly Included	Included



**ADDITIONAL GRADING INFORMATION**

Polish **EXCELLENT**  
Symmetry **VERY GOOD**  
Fluorescence **NONE**  
Inscription(s) **(IGI) LG729572352**  
Comments: As Grown - No indication of post-growth treatment.  
This Laboratory Grown Diamond was created by High Pressure High Temperature (HPHT) growth process.  
Type II



September 8, 2025  
IGI Report No. LG729572352  
**SQUARE CUSHION MODIFIED BRILLIANT**  
7.84 X 7.71 X 5.03 MM  
2.61 CARATS  
F  
VVS 1  
65.2%  
62%  
Medium to Very Thick (Faceted)  
Pointed  
EXCELLENT  
VERY GOOD  
NONE  
(IGI) LG729572352  
Comments: As Grown - No indication of post-growth treatment.  
This Laboratory Grown Diamond was created by High Pressure High Temperature (HPHT) growth process.  
Type II