



ELECTRONIC COPY

LG729574594
Report verification at igi.org



September 18, 2025

IGI Report Number **LG729574594**

Description **LABORATORY GROWN DIAMOND**

Shape and Cutting Style **CUT CORNERED
RECTANGULAR MODIFIED
BRILLIANT**

Measurements **7.31 X 5.27 X 3.57 MM**

GRADING RESULTS

Carat Weight **1.33 CARAT**

Color Grade **FANCY VIVID BLUE**

Clarity Grade **VVS 1**

LABORATORY GROWN DIAMOND REPORT

September 18, 2025

IGI Report Number **LG729574594**

Description **LABORATORY GROWN DIAMOND**

Shape and Cutting Style **CUT CORNERED RECTANGULAR
MODIFIED BRILLIANT**

Measurements **7.31 X 5.27 X 3.57 MM**

GRADING RESULTS

Carat Weight **1.33 CARAT**

Color Grade **FANCY VIVID BLUE**

Clarity Grade **VVS 1**

ADDITIONAL GRADING INFORMATION

Polish **EXCELLENT**

Symmetry **EXCELLENT**

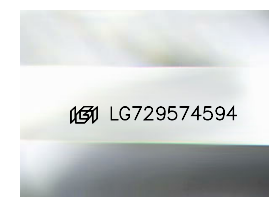
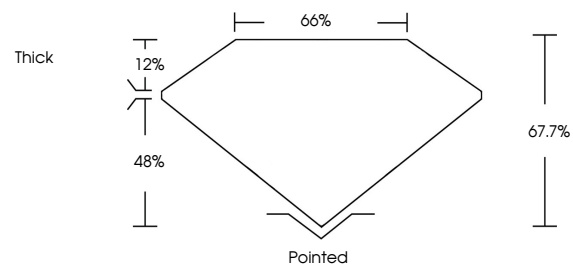
Fluorescence **NONE**

Inscription(s) **IGI LG729574594**

Comments: As Grown - No indication of post-growth treatment.

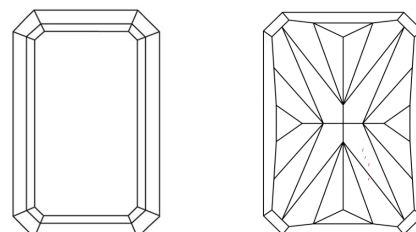
This Laboratory Grown Diamond was created by High Pressure High Temperature (HPHT) growth process.

PROPORTIONS



Sample Image Used

CLARITY CHARACTERISTICS



KEY TO SYMBOLS

Red symbols indicate internal characteristics.
Green symbols indicate external characteristics.

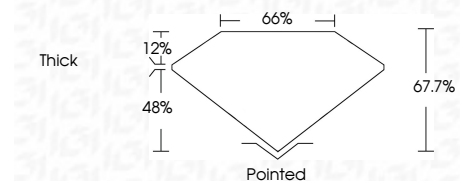
COLOR

D E F G H I J Faint Very Light Light

CLARITY

IF WS¹⁻² VS¹⁻² SI¹⁻² I¹⁻³

Internally Flawless Very Very Slightly Included Very Slightly Included Slightly Included Included



ADDITIONAL GRADING INFORMATION

Polish **EXCELLENT**

Symmetry **EXCELLENT**

Fluorescence **NONE**

Inscription(s) **IGI LG729574594**

Comments: As Grown - No indication of post-growth treatment.

This Laboratory Grown Diamond was created by High Pressure High Temperature (HPHT) growth process.



IGI



September 18, 2025	IGI Report No LG729574594	CUT CORNERED RECT. MODIFIED BRILLIANT	1.33 CARAT	FANCY VIVID BLUE	VVS 1	67.7%	66%	Thick	Pointed	EXCELLENT	EXCELLENT	NONE	IGI LG729574594
7.31 X 5.27 X 3.57 MM	Carat Weight	Color Grade	Clarity Grade	Depth	Table	Girdle	Culet	Polish	Symmetry	Fluorescence	Inscription(s)	Comments: As Grown - No indication of post-growth treatment. This Laboratory Grown Diamond was created by High Pressure High Temperature (HPHT) growth process.	