

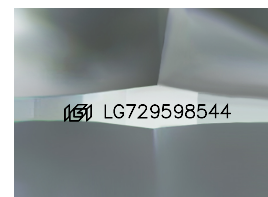
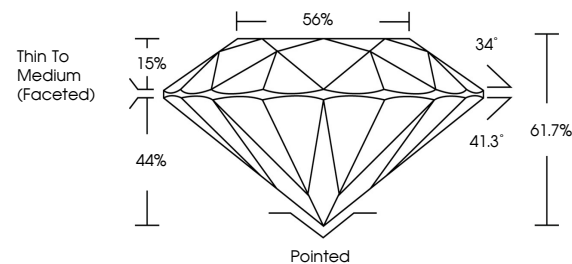


ELECTRONIC COPY

LABORATORY GROWN DIAMOND REPORT

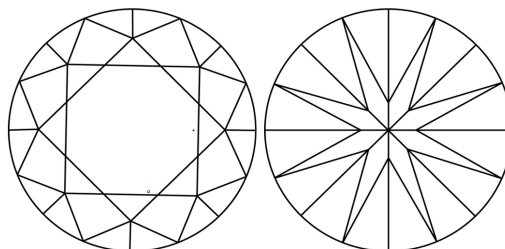
LG729598544
Report verification at igi.org

PROPORTIONS



Sample Image Used

CLARITY CHARACTERISTICS



KEY TO SYMBOLS

Red symbols indicate internal characteristics.
Green symbols indicate external characteristics.

COLOR

D E F G H I J Faint Very Light Light

CLARITY

IF WS¹⁻² VS¹⁻² SI¹⁻² |¹⁻³

Internally Flawless	Very Very Slightly Included	Very Slightly Included	Slightly Included	Included
------------------------	--------------------------------	---------------------------	----------------------	----------

LABORATORY GROWN DIAMOND REPORT



September 16, 2025

IGI Report Number **LG729598544**Description **LABORATORY GROWN DIAMOND**Shape and Cutting Style **ROUND BRILLIANT**

Measurements 9.26 - 9.34 X 5.74 MM

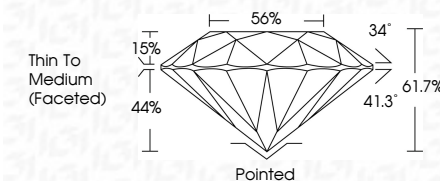
GRADING RESULTS

Carat Weight **3.01 CARATS**

Color Grade E

Clarity Grade **VVS 2**

Cut Grade **IDEAL**



ADDITIONAL GRADING INFORMATION

Polish EXCELLENT

Symmetry **EXCELLENT**Fluorescence **NONE**Inscription(s) LG729598544

Comments: This Laboratory Grown Diamond was created by Chemical Vapor Deposition (CVD) growth process.
Type IIa



© IGI 2020, International Gemological Institute

FD - 10 20

www.igi.org



THIS DOCUMENT WAS PRODUCED WITH THE FOLLOWING SECURITY MEASURES: SPECIAL DOCUMENT PAPER, INK SCREENS, WATERMARK, BACKGROUND DESIGNS, HOLOGRAM AND OTHER SECURITY FEATURES NOT LISTED AND DO EXCEED DOCUMENT SECURITY INDUSTRY GUIDELINE

September 16, 2025
IGI Report No LG729598544
ROUND BRILLIANT

9.26 - 9.34 X 5.74 MM		3.01 CARATS	
Carat Weight	Color Grade	VVS 2	Pointed
Clarity Grade	Cut Grade	IDEAL	EXCELLENT
Depth	Table	61.7%	EXCELLENT
Girdle		56%	NONE
Culet		Thin To Medium (Faceted)	
Polish			
Symmetry			
Fluorescence			

Comments:
This Laboratory Grown Diamond was created by Chemical Vapor Deposition (CVD) growth process.