



**ELECTRONIC COPY**

LG731543292  
Report verification at igi.org



September 11, 2025  
IGI Report Number **LG731543292**  
Description **LABORATORY GROWN DIAMOND**  
Shape and Cutting Style **CUT CORNERED  
RECTANGULAR MODIFIED  
BRILLIANT**  
Measurements **10.60 X 6.91 X 4.40 MM**  
**GRADING RESULTS**  
Carat Weight **2.83 CARATS**  
Color Grade **E**  
Clarity Grade **VVS 2**

September 11, 2025  
IGI Report Number **LG731543292**  
Description **LABORATORY GROWN DIAMOND**  
Shape and Cutting Style **CUT CORNERED RECTANGULAR  
MODIFIED BRILLIANT**  
Measurements **10.60 X 6.91 X 4.40 MM**

**GRADING RESULTS**

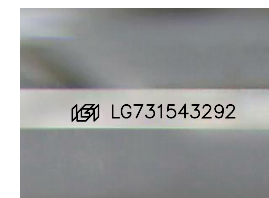
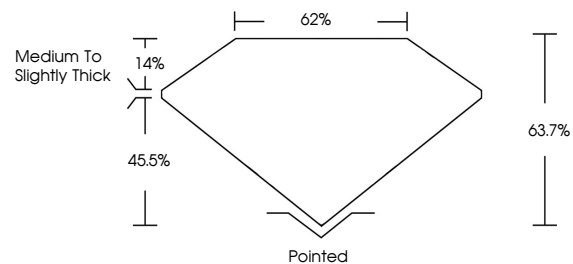
Carat Weight **2.83 CARATS**  
Color Grade **E**  
Clarity Grade **VVS 2**

**ADDITIONAL GRADING INFORMATION**

Polish **EXCELLENT**  
Symmetry **EXCELLENT**  
Fluorescence **NONE**  
Inscription(s) **IGI LG731543292**

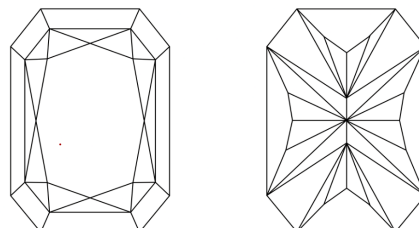
Comments: This Laboratory Grown Diamond was created by Chemical Vapor Deposition (CVD) growth process.  
Type IIa

**PROPORTIONS**



Sample Image Used

**CLARITY CHARACTERISTICS**



**KEY TO SYMBOLS**

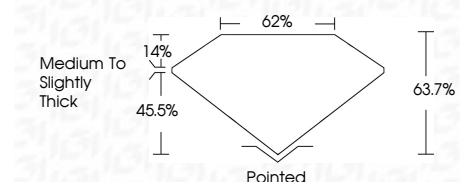
Red symbols indicate internal characteristics.  
Green symbols indicate external characteristics.

**COLOR**

D E F G H I J Faint Very Light Light

**CLARITY**

IF	VS <sup>1-2</sup>	VS <sup>1-2</sup>	SI <sup>1-2</sup>	I <sup>1-3</sup>
Internally Flawless	Very Very Slightly Included	Very Slightly Included	Slightly Included	Included



**ADDITIONAL GRADING INFORMATION**

Polish **EXCELLENT**  
Symmetry **EXCELLENT**  
Fluorescence **NONE**  
Inscription(s) **IGI LG731543292**  
Comments: This Laboratory Grown Diamond was created by Chemical Vapor Deposition (CVD) growth process.  
Type IIa



September 11, 2025  
IGI Report No LG731543292  
CUT CORNERED RECT. MODIFIED BRILLIANT  
10.60 X 6.91 X 4.40 MM  
2.83 CARATS  
E  
VVS 2  
63.7%  
62%  
Medium to Slightly Thick  
Pointed  
EXCELLENT  
EXCELLENT  
NONE  
IGI LG731543292

Comments: This Laboratory Grown Diamond was created by Chemical Vapor Deposition (CVD) growth process.  
Type IIa