



**ELECTRONIC COPY**

LG731590216  
Report verification at igi.org



September 4, 2025

IGI Report Number **LG731590216**

Description **LABORATORY GROWN DIAMOND**

Shape and Cutting Style **ROUND BRILLIANT**

Measurements **8.93 - 8.96 X 5.37 MM**

**GRADING RESULTS**

Carat Weight **2.65 CARATS**

Color Grade **FANCY INTENSE BLUE**

Clarity Grade **VS 1**

Cut Grade **IDEAL**

September 4, 2025  
IGI Report Number **LG731590216**  
Description **LABORATORY GROWN DIAMOND**  
Shape and Cutting Style **ROUND BRILLIANT**  
Measurements **8.93 - 8.96 X 5.37 MM**

**GRADING RESULTS**

Carat Weight **2.65 CARATS**

Color Grade **FANCY INTENSE BLUE**

Clarity Grade **VS 1**

Cut Grade **IDEAL**

**ADDITIONAL GRADING INFORMATION**

Polish **EXCELLENT**

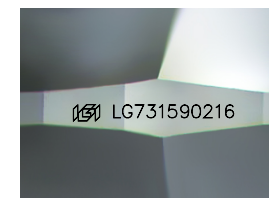
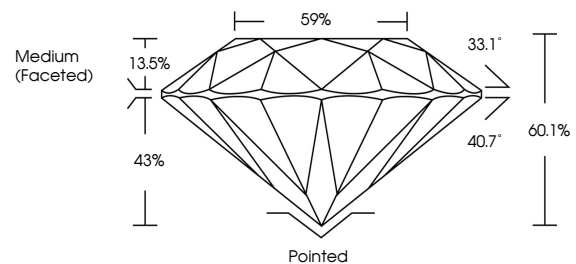
Symmetry **EXCELLENT**

Fluorescence **NONE**

Inscription(s) **IGI LG731590216**

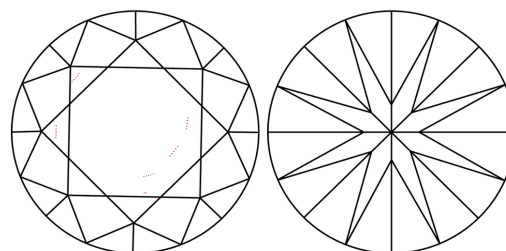
Comments: This Laboratory Grown Diamond was created by Chemical Vapor Deposition (CVD) growth process.  
Indications of post-growth treatment.

**PROPORTIONS**



Sample Image Used

**CLARITY CHARACTERISTICS**



**KEY TO SYMBOLS**

Red symbols indicate internal characteristics.  
Green symbols indicate external characteristics.

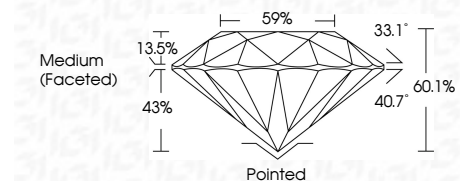
**COLOR**

D E F G H I J Faint Very Light Light

**CLARITY**

IF VS<sup>1-2</sup> VS<sup>1-2</sup> SI<sup>1-2</sup> I<sup>1-3</sup>

Internally Flawless Very Very Slightly Included Very Slightly Included Slightly Included Included



**ADDITIONAL GRADING INFORMATION**

Polish **EXCELLENT**

Symmetry **EXCELLENT**

Fluorescence **NONE**

Inscription(s) **IGI LG731590216**

Comments: This Laboratory Grown Diamond was created by Chemical Vapor Deposition (CVD) growth process.  
Indications of post-growth treatment.



**IGI**



|                           |                    |                  |                 |
|---------------------------|--------------------|------------------|-----------------|
| September 4, 2025         | 2.65 CARATS        | VS 1             | Pointed         |
| IGI Report No LG731590216 | FANCY INTENSE BLUE | IDEAL            | EXCELLENT       |
| ROUND BRILLIANT           | VS 1               | 60.1%            | EXCELLENT       |
| 8.93 - 8.96 X 5.37 MM     | IDEAL              | 59%              | NONE            |
| Carat Weight              | VS 1               | Medium (Faceted) | IGI LG731590216 |
| Color Grade               | IDEAL              |                  |                 |
| Clarity Grade             | VS 1               |                  |                 |
| Cut Grade                 | IDEAL              |                  |                 |
| Depth                     | 60.1%              |                  |                 |
| Table                     | 59%                |                  |                 |
| Girdle                    | Medium (Faceted)   |                  |                 |
| Culet                     | Pointed            |                  |                 |
| Polish                    | EXCELLENT          |                  |                 |
| Symmetry                  | EXCELLENT          |                  |                 |
| Fluorescence              | NONE               |                  |                 |
| Inscription(s)            | IGI LG731590216    |                  |                 |

Comments: This Laboratory Grown Diamond was created by Chemical Vapor Deposition (CVD) growth process.  
Indications of post-growth treatment.