

**ELECTRONIC COPY**

## LABORATORY GROWN DIAMOND REPORT

September 24, 2025	
IGI Report Number	LG732516650
Description	LABORATORY GROWN DIAMOND
Shape and Cutting Style	CUT CORNERED RECTANGULAR MODIFIED BRILLIANT
Measurements	9.97 X 7.10 X 4.85 MM

## GRADING RESULTS

Carat Weight	3.03 CARATS
Color Grade	D
Clarity Grade	INTERNALLY FLAWLESS

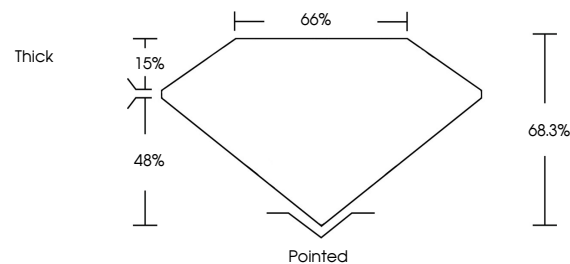
### ADDITIONAL GRADING INFORMATION

Polish	EXCELLENT
Symmetry	EXCELLENT
Fluorescence	NONE
Inscription(s)	 LG732516650

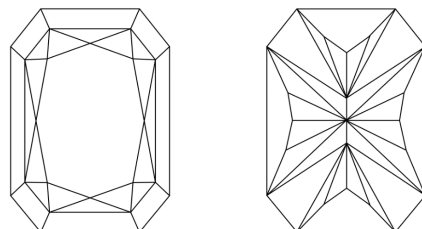
Comments: As Grown - No indication of post-growth treatment.  
This Laboratory Grown Diamond was created by High Pressure High Temperature (HPHT) growth process.  
Type II

LG732516650  
Report verification at [igi.org](https://igi.org)

## PROPORTIONS

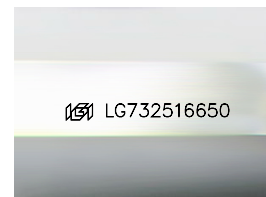


## CLARITY CHARACTERISTICS



## KEY TO SYMBOLS

Red symbols indicate internal characteristics.  
Green symbols indicate external characteristics.



Sample Image Used

**COLOR**

D E F G H I J Faint Very Light Light

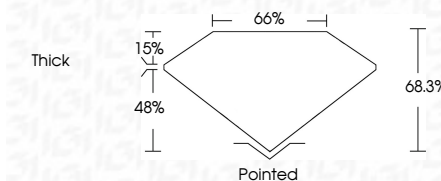
## CLARITY

IF	VS <sup>1-2</sup>	VS <sup>1-2</sup>	SI <sup>1-2</sup>	I <sup>1-3</sup>
Internally Flawless	Very Very Slightly Included	Very Slightly Included	Slightly Included	Included

## LABORATORY GROWN DIAMOND REPORT



September 24, 2025	
IGI Report Number	LG732516650
Description	LABORATORY GROWN DIAMOND
Shape and Cutting Style	CUT CORNERED RECTANGULAR MODIFIED BRILLIANT
Measurements	9.97 X 7.10 X 4.85 MM
GRADING RESULTS	
Carat Weight	3.03 CARATS
Color Grade	D
Clarity Grade	INTERNALLY FLAWLESS



### ADDITIONAL GRADING INFORMATION

Polish	EXCELLENT
Symmetry	EXCELLENT
Fluorescence	NONE
Inscription(s)	 LG732516650
Comments: As Grown - No indication of post-growth treatment.	
This Laboratory Grown Diamond was created by High Pressure High Temperature (HPHT) growth process.	
Type II	



© IGI 2020, International Gemological Institute

FD - 10 20

Saturday, Sep 24, 2025
GJ Report No LG7926 16460
CUT CORNERED RECT. MODIFIED BRILLIANT
D EIGHT CUT X 7.10 X 4.85 MM
3.03 CARATS D LF 68.3% 66%
THICK Painted EXCELLENT EXCELLENT NONE
LGI LG7926 16460

Comments:

- As Grown - No indication of post-growth treatment.
- This Laboratory Grown Diamond was created by High Pressure High Temperature (HPHT) growth process.