



**ELECTRONIC COPY**

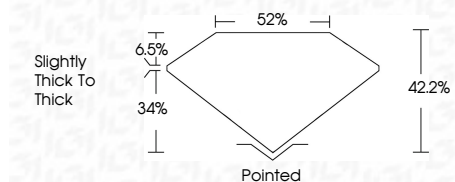
LG732552553  
Report verification at igi.org



September 15, 2025  
IGI Report Number **LG732552553**  
Description **LABORATORY GROWN DIAMOND**  
Shape and Cutting Style **TRIANGULAR MIXED CUT**  
Measurements **9.80 X 11.17 X 4.71 MM**

**GRADING RESULTS**

Carat Weight **2.07 CARATS**  
Color Grade **D**  
Clarity Grade **VVS 2**



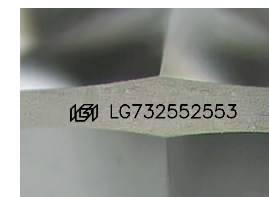
**ADDITIONAL GRADING INFORMATION**

Polish **EXCELLENT**  
Symmetry **EXCELLENT**  
Fluorescence **NONE**  
Inscription(s) **IGI LG732552553**  
Comments: This Laboratory Grown Diamond was created by Chemical Vapor Deposition (CVD) growth process.  
Type IIa



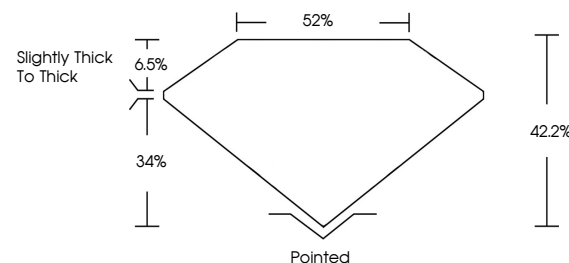
**IGI**

September 15, 2025  
IGI Report No LG732552553  
**TRIANGULAR MIXED CUT**  
9.80 X 11.17 X 4.71 MM  
2.07 CARATS  
D  
VVS 2  
42.2%  
6.5%  
34%  
Pointed  
EXCELLENT  
EXCELLENT  
NONE  
IGI LG732552553  
Comments: This Laboratory Grown Diamond was created by Chemical Vapor Deposition (CVD) growth process.  
Type IIa

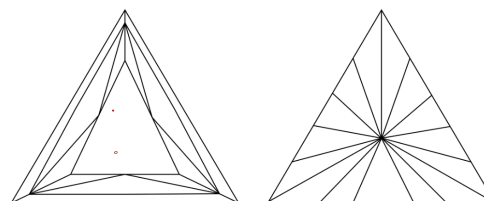


Sample Image Used

**PROPORTIONS**



**CLARITY CHARACTERISTICS**



**KEY TO SYMBOLS**

Red symbols indicate internal characteristics.  
Green symbols indicate external characteristics.

**COLOR**

D E F G H I J Faint Very Light Light

**CLARITY**

IF	WS <sup>1-2</sup>	VS <sup>1-2</sup>	SI <sup>1-2</sup>	I <sup>1-3</sup>
Internally Flawless	Very Very Slightly Included	Very Slightly Included	Slightly Included	Included

