



ELECTRONIC COPY

LABORATORY GROWN DIAMOND REPORT

| | |
|-------------------------|--------------------------|
| September 25, 2025 | |
| IGI Report Number | LG732564318 |
| Description | LABORATORY GROWN DIAMOND |
| Shape and Cutting Style | ROUND BRILLIANT |
| Measurements | 7.37 - 7.40 X 4.51 MM |

GRADING RESULTS

| | |
|---------------|--------------------|
| Carat Weight | 1.51 CARAT |
| Color Grade | FANCY INTENSE PINK |
| Clarity Grade | VVS 2 |
| Cut Grade | IDEAL |

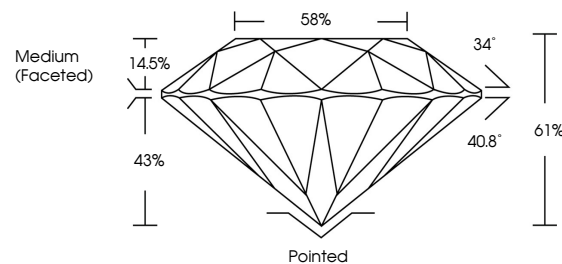
ADDITIONAL GRADING INFORMATION

| | |
|----------------|---|
| Polish | EXCELLENT |
| Symmetry | EXCELLENT |
| Fluorescence | SLIGHT |
| Inscription(s) |  LG732564318 |

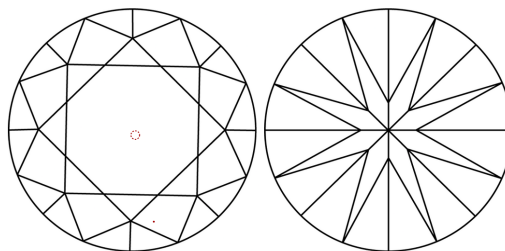
Comments: This Laboratory Grown Diamond was created by Chemical Vapor Deposition (CVD) growth process.
Indications of post-growth treatment.

LG732564318
Report verification at igi.org

PROPORTIONS

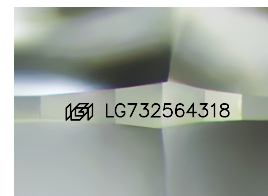


CLARITY CHARACTERISTICS



KEY TO SYMBOLS

Red symbols indicate internal characteristics.
Green symbols indicate external characteristics.



Sample Image Used

COLOR

D E F G H I J Faint Very Light Light

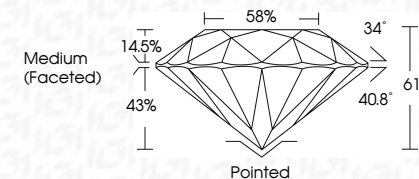
CLARITY

IF WS¹⁻² VS¹⁻² SI¹⁻² |¹⁻³

| | | | | |
|------------------------|--------------------------------|---------------------------|----------------------|----------|
| Internally Flawless | Very Very Slightly Included | Very Slightly Included | Slightly Included | Included |
|------------------------|--------------------------------|---------------------------|----------------------|----------|



| | |
|-------------------------|--------------------------|
| September 25, 2025 | |
| IGI Report Number | LG732564318 |
| Description | LABORATORY GROWN DIAMOND |
| Shape and Cutting Style | ROUND BRILLIANT |
| Measurements | 7.37 - 7.40 X 4.51 MM |
| GRADING RESULTS | |
| Carat Weight | 1.51 CARAT |
| Color Grade | FANCY INTENSE PINK |
| Clarity Grade | VVS 2 |
| Cut Grade | IDEAL |



ADDITIONAL GRADING INFORMATION

| | |
|--|--|
| Polish | EXCELLENT |
| Symmetry | EXCELLENT |
| Fluorescence | SLIGHT |
| Inscription(s) |  LG732564318 |
| <p>Comments: This Laboratory Grown Diamond was created by Chemical Vapor Deposition (CVD) growth process.</p> <p>Indications of post-growth treatment.</p> | |



© IGI 2020, International Gemological Institute

FD - 10 20



THIS DOCUMENT WAS PRODUCED WITH THE FOLLOWING SECURITY MEASURES: SPECIAL DOCUMENT PAPER, INK SCREENS, WATERMARK, BACKGROUND DESIGNS, HOLOGRAM AND OTHER SECURITY FEATURES NOT LISTED AND DO EXCEED DOCUMENT SECURITY INDUSTRY GUIDELINE

www.igi.org

September 25, 2025
IGI Report No LG732564318
ROUND BRILLIANT

| | | | | | | | | |
|-----------------|-----------------------|------------|--------------------|---------------|-----------|-------|-------|---------------------|
| ROUND BRILLIANT | 7.37 - 7.40 X 4.51 MM | 1.51 CARAT | FANCY INTENSE PINK | VS 2 | IDEAL | 61% | 58% | Mezz Lm (Excellent) |
| | Carat Weight | | Color Grade | Clarity Grade | Cut Grade | Depth | Table | Girdle |

| | |
|--------------|-----------|
| Culet | Pointed |
| Polish | EXCELLENT |
| Symmetry | EXCELLENT |
| Fluorescence | SLIGHT |

Comments:
This Laboratory Grown Diamond was created by Chemical Vapor Deposition (CVD) growth process.