



ELECTRONIC COPY

LG732576319
Report verification at igi.org

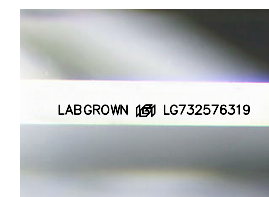


September 8, 2025
IGI Report Number **LG732576319**
Description **LABORATORY GROWN DIAMOND**
Shape and Cutting Style **CUT CORNERED
RECTANGULAR MODIFIED
BRILLIANT**

Measurements **9.38 X 6.89 X 5.18 MM**

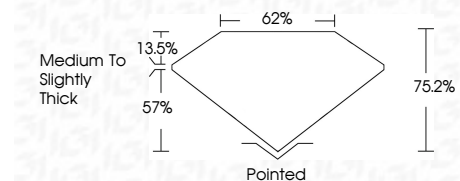
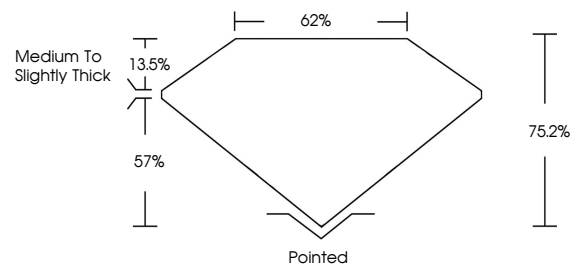
GRADING RESULTS

Carat Weight **2.87 CARATS**
Color Grade **E**
Clarity Grade **VS 2**



Sample Image Used

PROPORTIONS



ADDITIONAL GRADING INFORMATION

Polish **EXCELLENT**
Symmetry **EXCELLENT**
Fluorescence **NONE**

Inscription(s) **LABGROWN (IGI) LG732576319**

Comments: This Laboratory Grown Diamond was created by Chemical Vapor Deposition (CVD) growth process. Type IIa

COLOR

D E F G H I J Faint Very Light Light

CLARITY

IF	WS ¹⁻²	VS ¹⁻²	SI ¹⁻²	I ¹⁻³
Internally Flawless	Very Very Slightly Included	Very Slightly Included	Slightly Included	Included



IGI



September 8, 2025
IGI Report No LG732576319
CUT CORNERED RECT. MODIFIED BRILLIANT
9.38 X 6.89 X 5.18 MM
2.87 CARATS
E
VS 2
62%
Medium to Slightly Thick
Pointed
EXCELLENT
EXCELLENT
NONE
LABGROWN (IGI) LG732576319
Comments: This Laboratory Grown Diamond was created by Chemical Vapor Deposition (CVD) growth process. Type IIa