



**ELECTRONIC COPY**

LG732584095  
Report verification at igi.org



September 18, 2025

IGI Report Number **LG732584095**

Description **LABORATORY GROWN DIAMOND**

Shape and Cutting Style **PRINCESS CUT**

Measurements **7.48 X 7.43 X 5.47 MM**

**GRADING RESULTS**

Carat Weight **2.69 CARATS**

Color Grade **E**

Clarity Grade **VVS 2**

September 18, 2025  
IGI Report Number **LG732584095**  
Description **LABORATORY GROWN DIAMOND**  
Shape and Cutting Style **PRINCESS CUT**  
Measurements **7.48 X 7.43 X 5.47 MM**

**GRADING RESULTS**

Carat Weight **2.69 CARATS**

Color Grade **E**

Clarity Grade **VVS 2**

**ADDITIONAL GRADING INFORMATION**

Polish **EXCELLENT**

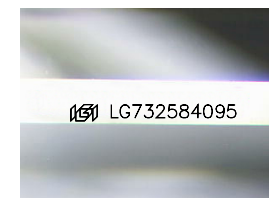
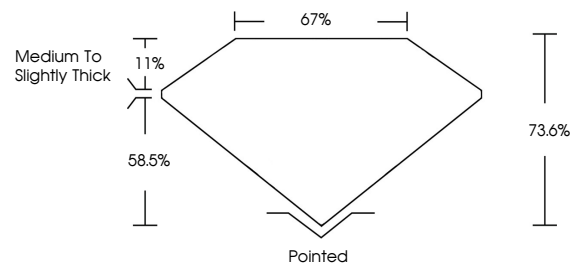
Symmetry **EXCELLENT**

Fluorescence **NONE**

Inscription(s) **IGI LG732584095**

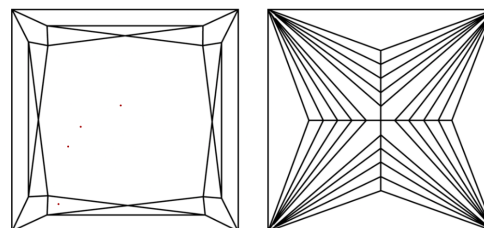
Comments: This Laboratory Grown Diamond was created by Chemical Vapor Deposition (CVD) growth process. Type IIa

**PROPORTIONS**



Sample Image Used

**CLARITY CHARACTERISTICS**



**KEY TO SYMBOLS**

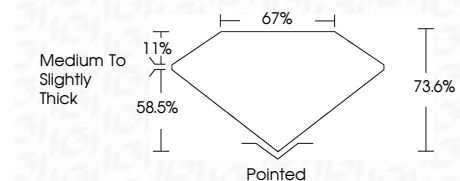
Red symbols indicate internal characteristics.  
Green symbols indicate external characteristics.

**COLOR**

D E F G H I J Faint Very Light Light

**CLARITY**

IF	VS <sup>1-2</sup>	VVS <sup>1-2</sup>	S <sup>1-2</sup>	I <sup>1-3</sup>
Internally Flawless	Very Very Slightly Included	Very Slightly Included	Slightly Included	Included



**ADDITIONAL GRADING INFORMATION**

Polish **EXCELLENT**

Symmetry **EXCELLENT**

Fluorescence **NONE**

Inscription(s) **IGI LG732584095**

Comments: This Laboratory Grown Diamond was created by Chemical Vapor Deposition (CVD) growth process. Type IIa



**IGI**



September 18, 2025  
IGI Report No. LG732584095  
**PRINCESS CUT**

**7.48 X 7.43 X 5.47 MM**

**2.69 CARATS**

Carat Weight **E**

Color Grade **VVS 2**

Clarity Grade **73.6%**

Depth **67%**

Table **Medium to Slightly Thick**

Girdle **Pointed**

Culet **EXCELLENT**

Polish **EXCELLENT**

Symmetry **EXCELLENT**

Fluorescence **NONE**

Inscription(s) **IGI LG732584095**

Comments: This Laboratory Grown Diamond was created by Chemical Vapor Deposition (CVD) growth process. Type IIa