



ELECTRONIC COPY

LG733531556
Report verification at igi.org



September 11, 2025

IGI Report Number **LG733531556**

Description **LABORATORY GROWN DIAMOND**

Shape and Cutting Style **TRIANGULAR MIXED CUT**

Measurements **9.48 X 11.46 X 4.87 MM**

GRADING RESULTS

Carat Weight **2.36 CARATS**

Color Grade **E**

Clarity Grade **VVS 2**

September 11, 2025
IGI Report Number **LG733531556**
Description **LABORATORY GROWN DIAMOND**
Shape and Cutting Style **TRIANGULAR MIXED CUT**
Measurements **9.48 X 11.46 X 4.87 MM**

GRADING RESULTS

Carat Weight **2.36 CARATS**

Color Grade **E**

Clarity Grade **VVS 2**

ADDITIONAL GRADING INFORMATION

Polish **EXCELLENT**

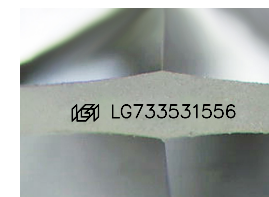
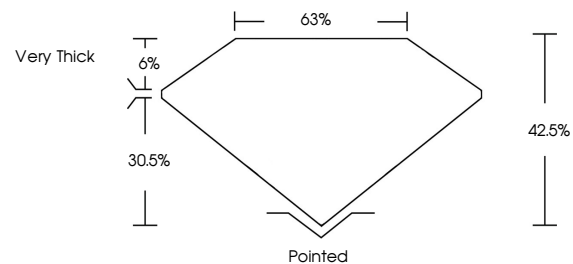
Symmetry **EXCELLENT**

Fluorescence **NONE**

Inscription(s) **LG733531556**

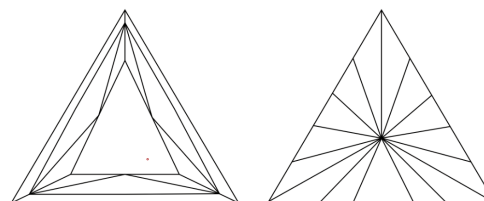
Comments: This Laboratory Grown Diamond was created by Chemical Vapor Deposition (CVD) growth process.
Type IIa

PROPORTIONS



Sample Image Used

CLARITY CHARACTERISTICS



KEY TO SYMBOLS

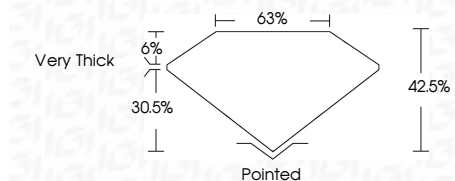
Red symbols indicate internal characteristics.
Green symbols indicate external characteristics.

COLOR

D E F G H I J Faint Very Light Light

CLARITY

IF	VS ¹⁻²	VS ¹⁻²	SI ¹⁻²	I ¹⁻³
Internally Flawless	Very Very Slightly Included	Very Slightly Included	Slightly Included	Included



ADDITIONAL GRADING INFORMATION

Polish **EXCELLENT**

Symmetry **EXCELLENT**

Fluorescence **NONE**

Inscription(s) **LG733531556**

Comments: This Laboratory Grown Diamond was created by Chemical Vapor Deposition (CVD) growth process.
Type IIa



September 11, 2025
IGI Report No LG733531556
TRIANGULAR MIXED CUT
9.48 X 11.46 X 4.87 MM
2.36 CARATS
E
VS 2
42.5%
6%
30.5%
Very Thick
Pointed
EXCELLENT
EXCELLENT
NONE
None
IGI LG733531556
Comments: This Laboratory Grown Diamond was created by Chemical Vapor Deposition (CVD) growth process.
Type IIa