



**ELECTRONIC COPY**

LG733536830  
Report verification at igi.org



September 10, 2025  
IGI Report Number **LG733536830**  
Description **LABORATORY GROWN DIAMOND**  
Shape and Cutting Style **CUT CORNERED  
RECTANGULAR MODIFIED  
BRILLIANT**  
Measurements **10.50 X 7.64 X 5.13 MM**  
**GRADING RESULTS**  
Carat Weight **3.52 CARATS**  
Color Grade **E**  
Clarity Grade **VS 2**

September 10, 2025  
IGI Report Number **LG733536830**  
Description **LABORATORY GROWN DIAMOND**  
Shape and Cutting Style **CUT CORNERED RECTANGULAR  
MODIFIED BRILLIANT**  
Measurements **10.50 X 7.64 X 5.13 MM**

**GRADING RESULTS**

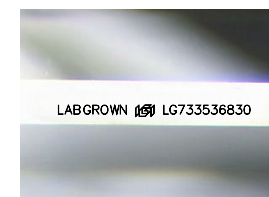
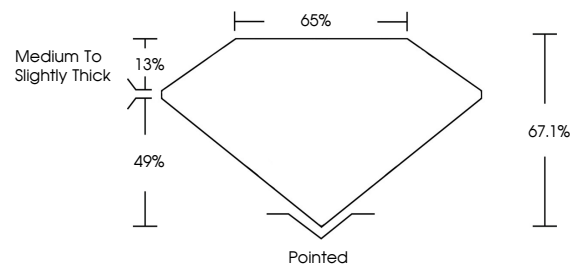
Carat Weight **3.52 CARATS**  
Color Grade **E**  
Clarity Grade **VS 2**

**ADDITIONAL GRADING INFORMATION**

Polish **EXCELLENT**  
Symmetry **EXCELLENT**  
Fluorescence **NONE**  
Inscription(s) **LABGROWN (IGI) LG733536830**

Comments: This Laboratory Grown Diamond was created by Chemical Vapor Deposition (CVD) growth process.  
Type IIa

**PROPORTIONS**



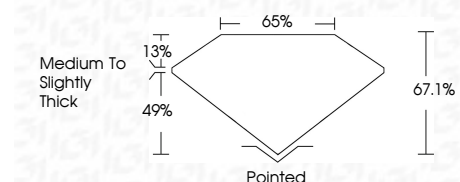
Sample Image Used

**COLOR**

D E F G H I J Faint Very Light Light

**CLARITY**

IF	VS <sup>1-2</sup>	VS <sup>1-2</sup>	SI <sup>1-2</sup>	I <sup>1-3</sup>
Internally Flawless	Very Very Slightly Included	Very Slightly Included	Slightly Included	Included



**ADDITIONAL GRADING INFORMATION**

Polish **EXCELLENT**  
Symmetry **EXCELLENT**  
Fluorescence **NONE**  
Inscription(s) **LABGROWN (IGI) LG733536830**  
Comments: This Laboratory Grown Diamond was created by Chemical Vapor Deposition (CVD) growth process.  
Type IIa



September 10, 2025  
IGI Report No. LG733536830  
CUT CORNERED RECT. MODIFIED BRILLIANT  
10.50 X 7.64 X 5.13 MM  
3.52 CARATS  
E  
VS 2  
67.1%  
65%  
Medium to Slightly Thick  
Pointed  
EXCELLENT  
EXCELLENT  
NONE  
LABGROWN (IGI) LG733536830  
Comments: This Laboratory Grown Diamond was created by Chemical Vapor Deposition (CVD) growth process.  
Type IIa