



**ELECTRONIC COPY**

LG733548041  
Report verification at igi.org



September 17, 2025  
IGI Report Number **LG733548041**  
Description **LABORATORY GROWN DIAMOND**  
Shape and Cutting Style **CUSHION MODIFIED BRILLIANT**  
Measurements **7.45 X 5.84 X 3.90 MM**  
**GRADING RESULTS**  
Carat Weight **1.56 CARAT**  
Color Grade **FANCY VIVID GREEN**  
Clarity Grade **VVS 2**

**LABORATORY GROWN DIAMOND REPORT**

September 17, 2025  
IGI Report Number **LG733548041**  
Description **LABORATORY GROWN DIAMOND**  
Shape and Cutting Style **CUSHION MODIFIED BRILLIANT**  
Measurements **7.45 X 5.84 X 3.90 MM**

**GRADING RESULTS**

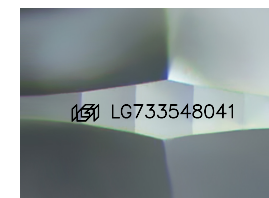
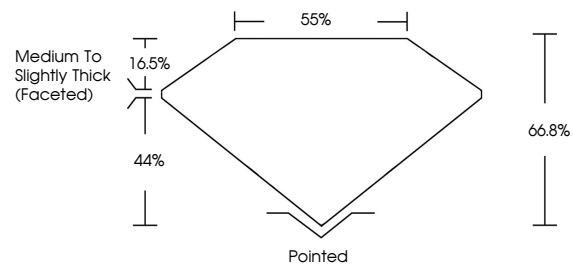
Carat Weight **1.56 CARAT**  
Color Grade **FANCY VIVID GREEN**  
Clarity Grade **VVS 2**

**ADDITIONAL GRADING INFORMATION**

Polish **EXCELLENT**  
Symmetry **EXCELLENT**  
Fluorescence **NONE**  
Inscription(s) **LG733548041**

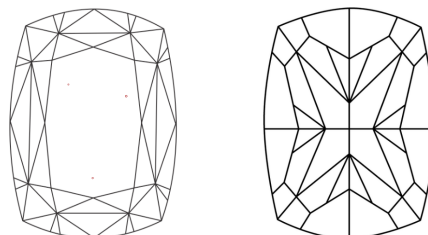
Comments: This Laboratory Grown Diamond was created by Chemical Vapor Deposition (CVD) growth process.  
Indications of post-growth treatment.

**PROPORTIONS**



Sample Image Used

**CLARITY CHARACTERISTICS**



**KEY TO SYMBOLS**

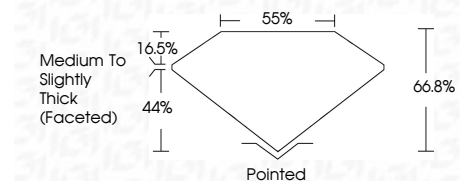
Red symbols indicate internal characteristics.  
Green symbols indicate external characteristics.

**COLOR**

D E F G H I J Faint Very Light Light

**CLARITY**

IF	VS <sup>1-2</sup>	VS <sup>1-2</sup>	SI <sup>1-2</sup>	I <sup>1-3</sup>
Internally Flawless	Very Very Slightly Included	Very Slightly Included	Slightly Included	Included



**ADDITIONAL GRADING INFORMATION**

Polish **EXCELLENT**  
Symmetry **EXCELLENT**  
Fluorescence **NONE**  
Inscription(s) **LG733548041**  
Comments: This Laboratory Grown Diamond was created by Chemical Vapor Deposition (CVD) growth process.  
Indications of post-growth treatment.



September 17, 2025  
IGI Report No LG733548041  
**CUSHION MODIFIED BRILLIANT**  
7.45 X 5.84 X 3.90 MM  
1.56 CARAT  
FANCY VIVID GREEN  
VVS 2  
66.8%  
44%  
Medium to Slightly Thick (Faceted)  
Pointed  
EXCELLENT  
EXCELLENT  
NONE  
IGI LG733548041  
Comments: This Laboratory Grown Diamond was created by Chemical Vapor Deposition (CVD) growth process.  
Indications of post-growth treatment.