



**ELECTRONIC COPY**

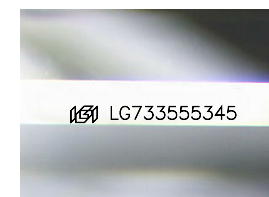
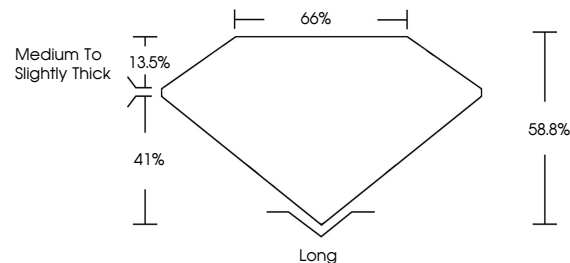
LG733555345  
Report verification at igi.org



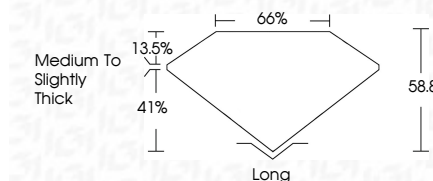
September 10, 2025  
IGI Report Number **LG733555345**  
Description **LABORATORY GROWN DIAMOND**  
Shape and Cutting Style **HEXAGONAL MODIFIED STEP CUT**  
Measurements **16.00 X 9.39 X 5.52 MM**  
**GRADING RESULTS**  
Carat Weight **6.13 CARATS**  
Color Grade **E**  
Clarity Grade **VVS 2**

September 10, 2025  
IGI Report Number **LG733555345**  
Description **LABORATORY GROWN DIAMOND**  
Shape and Cutting Style **HEXAGONAL MODIFIED STEP CUT**  
Measurements **16.00 X 9.39 X 5.52 MM**  
**GRADING RESULTS**  
Carat Weight **6.13 CARATS**  
Color Grade **E**  
Clarity Grade **VVS 2**

**PROPORTIONS**



Sample Image Used



**ADDITIONAL GRADING INFORMATION**

Polish **EXCELLENT**  
Symmetry **EXCELLENT**  
Fluorescence **NONE**  
Inscription(s) **IGI LG733555345**

Comments: This Laboratory Grown Diamond was created by Chemical Vapor Deposition (CVD) growth process.  
Type IIa

**ADDITIONAL GRADING INFORMATION**

Polish **EXCELLENT**  
Symmetry **EXCELLENT**  
Fluorescence **NONE**  
Inscription(s) **IGI LG733555345**  
Comments: This Laboratory Grown Diamond was created by Chemical Vapor Deposition (CVD) growth process.  
Type IIa

**COLOR**

D E F G H I J Faint Very Light Light

**CLARITY**

IF	VS <sup>1-2</sup>	VS <sup>1-2</sup>	SI <sup>1-2</sup>	I <sup>1-3</sup>
Internally Flawless	Very Very Slightly Included	Very Slightly Included	Slightly Included	Included



**IGI**



September 10, 2025  
IGI Report No LG733555345  
HEXAGONAL MODIFIED STEP CUT  
16.00 X 9.39 X 5.52 MM  
6.13 CARATS  
E  
VVS 2  
66%  
65%  
Medium to Slightly Thick  
Long  
EXCELLENT  
EXCELLENT  
NONE  
IGI LG733555345  
Comments: This Laboratory Grown Diamond was created by Chemical Vapor Deposition (CVD) growth process.  
Type IIa