



**ELECTRONIC COPY**

## DIAMOND REPORT

December 1, 2025	
IGI Report Number	733569102
Description	NATURAL DIAMOND
Shape and Cutting Style	ROUND BRILLIANT
Measurements	6.36 - 6.44 X 3.87 MM

## GRADING RESULTS

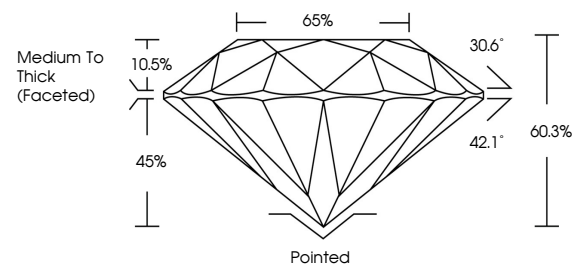
Carat Weight	1.00 CARAT
Color Grade	H
Clarity Grade	VS 2
Cut Grade	VERY GOOD

### ADDITIONAL GRADING INFORMATION

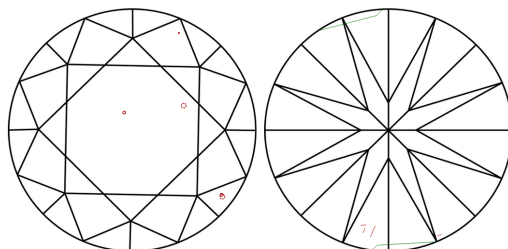
Polish	EXCELLENT
Symmetry	VERY GOOD
Fluorescence	VERY SLIGHT
Inscription(s)	151 733569102

733569102  
Report verification at [igi.org](https://www.igi.org)

## PROPORTIONS

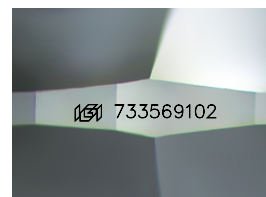


## CLARITY CHARACTERISTICS



### KEY TO SYMBOLS

Red symbols indicate internal characteristics.  
Green symbols indicate external characteristics.



Sample Image Used

**COLOR**

D - F	G - J	K - M	N - R	S - Z	FANCY
Colorless	Near Colorless	Slightly Tinted	Very Light Color	Light Color	

## CLARITY

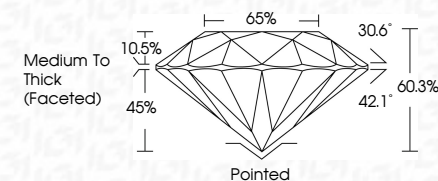
FL	IF	VVS <sup>1-2</sup>	VS <sup>1-2</sup>	SI <sup>1-2</sup>	I <sup>1-3</sup>
Flawless	Internally Flawless	Very Very Slightly Included	Very Slightly Included	Slightly Included	Included



December 1, 2025	
IGI Report Number	733569102
Description	NATURAL DIAMOND
Shape and Cutting Style	ROUND BRILLIANT
Measurements	6.36 - 6.44 X 3.87 MM

## GRADING RESULTS

Carat Weight	1.00 CARAT
Color Grade	H
Clarity Grade	VS 2
Cut Grade	VERY GOOD



### ADDITIONAL GRADING INFORMATION

Polish	EXCELLENT
Symmetry	VERY GOOD
Fluorescence	VERY SLIGHT
Inscription(s)	(13) 733569102



IG



© IGI 2020, International Gemological Institute

FD - 10 20



THIS DOCUMENT WAS PRODUCED WITH THE FOLLOWING SECURITY MEASURES: SPECIAL DOCUMENT PAPER, INK SCREENS, WATERMARK, BACKGROUND DESIGNS, HOLOGRAM AND OTHER SECURITY FEATURES NOT LISTED AND DO EXCEED DOCUMENT SECURITY INDUSTRY GUIDELINES

**www.igi.org**

December 1, 2025  
IGI Report No 733569  
ROUND BRILLIANT

3.35 - 6.44 X 3.57 MM	Carat Weight	1.00 CARAT
	Color Grade	H
	Clarity Grade	VS 2
	Cut Grade	VERY GOOD
	Depth	60.3%
	Table	65%
	Grade	Medium To Thick (Faceted)
	Culet	Pointed
	Polish	EXCELLENT
	Symmetry	VERY GOOD
	Fluorescence	VERY SLIGHT
	Inscriptions(s)	see 7355450102