



**ELECTRONIC COPY**

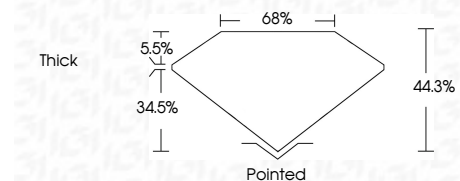
LG733582899  
Report verification at igi.org



September 15, 2025  
IGI Report Number **LG733582899**  
Description **LABORATORY GROWN DIAMOND**  
Shape and Cutting Style **TRIANGULAR MIXED CUT**  
Measurements **10.69 X 11.57 X 5.12 MM**

**GRADING RESULTS**

Carat Weight **2.74 CARATS**  
Color Grade **E**  
Clarity Grade **VVS 2**



**ADDITIONAL GRADING INFORMATION**

Polish **EXCELLENT**  
Symmetry **EXCELLENT**  
Fluorescence **NONE**  
Inscription(s) **IGI LG733582899**  
Comments: This Laboratory Grown Diamond was created by Chemical Vapor Deposition (CVD) growth process. Type IIa



September 15, 2025  
IGI Report No LG733582899  
**TRIANGULAR MIXED CUT**  
10.69 X 11.57 X 5.12 MM  
2.74 CARATS  
E  
VVS 2  
44.3%  
68%  
Thick  
Pointed  
EXCELLENT  
EXCELLENT  
NONE  
IGI LG733582899  
Comments: This Laboratory Grown Diamond was created by Chemical Vapor Deposition (CVD) growth process. Type IIa

**LABORATORY GROWN DIAMOND REPORT**

September 15, 2025  
IGI Report Number **LG733582899**  
Description **LABORATORY GROWN DIAMOND**  
Shape and Cutting Style **TRIANGULAR MIXED CUT**  
Measurements **10.69 X 11.57 X 5.12 MM**

**GRADING RESULTS**

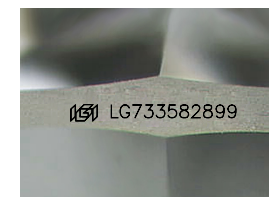
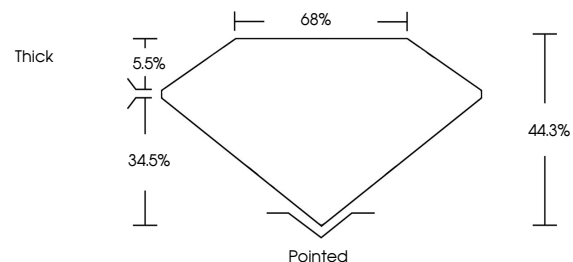
Carat Weight **2.74 CARATS**  
Color Grade **E**  
Clarity Grade **VVS 2**

**ADDITIONAL GRADING INFORMATION**

Polish **EXCELLENT**  
Symmetry **EXCELLENT**  
Fluorescence **NONE**  
Inscription(s) **IGI LG733582899**

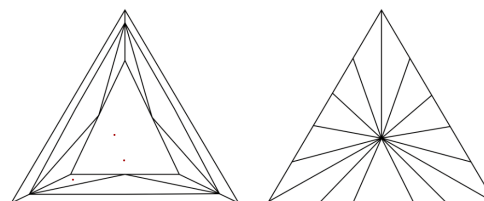
Comments: This Laboratory Grown Diamond was created by Chemical Vapor Deposition (CVD) growth process. Type IIa

**PROPORTIONS**



Sample Image Used

**CLARITY CHARACTERISTICS**



**KEY TO SYMBOLS**

Red symbols indicate internal characteristics.  
Green symbols indicate external characteristics.

**COLOR**

D E F G H I J Faint Very Light Light

**CLARITY**

IF	VS <sup>1-2</sup>	VS <sup>1-2</sup>	SI <sup>1-2</sup>	I <sup>1-3</sup>
Internally Flawless	Very Very Slightly Included	Very Slightly Included	Slightly Included	Included

