



**ELECTRONIC COPY**

LG733591040  
Report verification at igi.org



September 23, 2025

IGI Report Number **LG733591040**

Description **LABORATORY GROWN DIAMOND**

Shape and Cutting Style **EMERALD CUT**

Measurements **10.07 X 6.73 X 4.42 MM**

**GRADING RESULTS**

Carat Weight **2.99 CARATS**

Color Grade **FANCY VIVID PINK**

Clarity Grade **VS 2**

September 23, 2025  
IGI Report Number **LG733591040**  
Description **LABORATORY GROWN DIAMOND**  
Shape and Cutting Style **EMERALD CUT**  
Measurements **10.07 X 6.73 X 4.42 MM**

**GRADING RESULTS**

Carat Weight **2.99 CARATS**

Color Grade **FANCY VIVID PINK**

Clarity Grade **VS 2**

**ADDITIONAL GRADING INFORMATION**

Polish **EXCELLENT**

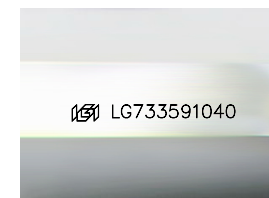
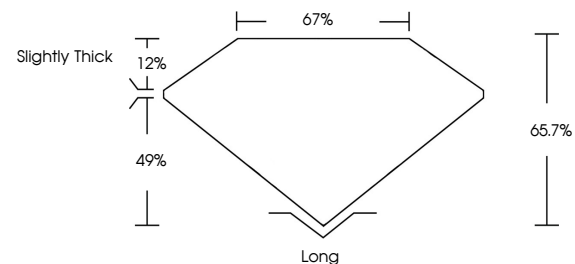
Symmetry **EXCELLENT**

Fluorescence **STRONG**

Inscription(s) **LG733591040**

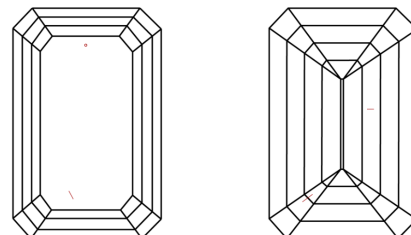
Comments: This Laboratory Grown Diamond was created by Chemical Vapor Deposition (CVD) growth process. Indications of post-growth treatment.

**PROPORTIONS**



Sample Image Used

**CLARITY CHARACTERISTICS**



**KEY TO SYMBOLS**

Red symbols indicate internal characteristics.  
Green symbols indicate external characteristics.

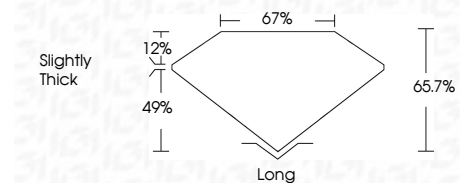
**COLOR**

D E F G H I J Faint Very Light Light

**CLARITY**

IF VS<sup>1-2</sup> VS<sup>1-2</sup> SI<sup>1-2</sup> I<sup>1-3</sup>

Internally Flawless Very Very Slightly Included Very Slightly Included Slightly Included Included



**ADDITIONAL GRADING INFORMATION**

Polish **EXCELLENT**

Symmetry **EXCELLENT**

Fluorescence **STRONG**

Inscription(s) **LG733591040**

Comments: This Laboratory Grown Diamond was created by Chemical Vapor Deposition (CVD) growth process. Indications of post-growth treatment.



**IGI**



September 23, 2025  
IGI Report No. LG733591040  
**EMERALD CUT**

**2.99 CARATS**  
Carat Weight  
**FANCY VIVID PINK**  
Color Grade

**VS 2**  
Clarity Grade  
**65.7%**  
Table  
**67%**  
Girdle  
**Slightly Thick**

**Long**  
Culet  
**EXCELLENT**  
Polish  
**EXCELLENT**  
Symmetry  
**STRONG**  
Fluorescence  
**IGI LG733591040**  
Inscription(s)

Comments: This Laboratory Grown Diamond was created by Chemical Vapor Deposition (CVD) growth process. Indications of post-growth treatment.