



ELECTRONIC COPY

734541188
Report verification at igi.org



January 24, 2026

IGI Report Number **734541188**

Description **NATURAL DIAMOND**

Shape and Cutting Style **ROUND BRILLIANT**

Measurements **6.49 - 6.55 X 4.12 MM**

GRADING RESULTS

Carat Weight **1.10 CARAT**

Color Grade **J**

Clarity Grade **INTERNALLY FLAWLESS**

Cut Grade **EXCELLENT**

DIAMOND REPORT

January 24, 2026

IGI Report Number **734541188**

Description **NATURAL DIAMOND**

Shape and Cutting Style **ROUND BRILLIANT**

Measurements **6.49 - 6.55 X 4.12 MM**

GRADING RESULTS

Carat Weight **1.10 CARAT**

Color Grade **J**

Clarity Grade **INTERNALLY FLAWLESS**

Cut Grade **EXCELLENT**

ADDITIONAL GRADING INFORMATION

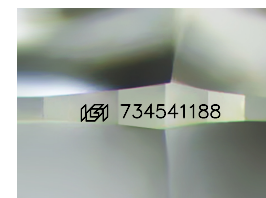
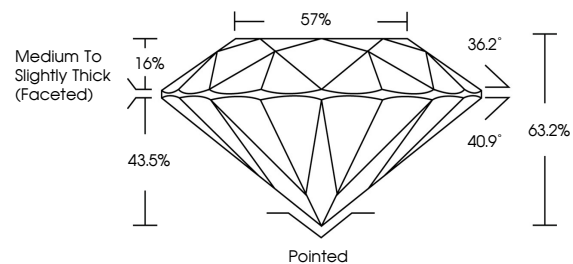
Polish **EXCELLENT**

Symmetry **EXCELLENT**

Fluorescence **NONE**

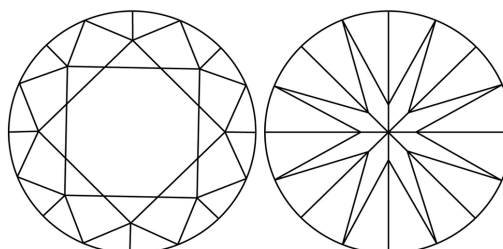
Inscription(s) **734541188**

PROPORTIONS



Sample Image Used

CLARITY CHARACTERISTICS



KEY TO SYMBOLS

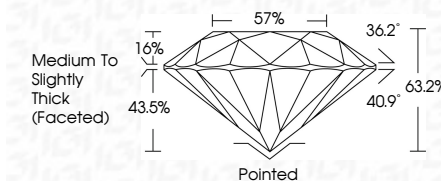
Red symbols indicate internal characteristics.
Green symbols indicate external characteristics.

COLOR

D - F	G - J	K - M	N - R	S - Z	FANCY
Colorless	Near Colorless	Slightly Tinted	Very Light Color	Light Color	

CLARITY

FL	IF	VVS ¹⁻²	VS ¹⁻²	SI ¹⁻²	I ¹⁻³
Flawless	Internally Flawless	Very Very Slightly Included	Very Slightly Included	Slightly Included	Included



ADDITIONAL GRADING INFORMATION

Polish **EXCELLENT**

Symmetry **EXCELLENT**

Fluorescence **NONE**

Inscription(s) **734541188**



IGI



January 24, 2026	1.10 CARAT	J	IF	EXCELLENT	63.2%	57%	Medium To Slightly Thick (Faceted)	Pointed	EXCELLENT	EXCELLENT	NONE	734541188
IGI Report No 734541188	6.49 - 6.55 X 4.12 MM	ROUND BRILLIANT	Color Grade	Clarity Grade	Depth	Table	Girdle	Culet	Polish	Symmetry	Fluorescence	Inscription(s)