



ELECTRONIC COPY

LG735504395
Report verification at igi.org



September 24, 2025

IGI Report Number **LG735504395**

Description **LABORATORY GROWN DIAMOND**

Shape and Cutting Style **EMERALD CUT**

Measurements **10.48 X 7.50 X 5.03 MM**

GRADING RESULTS

Carat Weight **4.04 CARATS**

Color Grade **FANCY INTENSE PINK**

Clarity Grade **VS 2**

September 24, 2025
IGI Report Number **LG735504395**
Description **LABORATORY GROWN DIAMOND**
Shape and Cutting Style **EMERALD CUT**
Measurements **10.48 X 7.50 X 5.03 MM**

GRADING RESULTS

Carat Weight **4.04 CARATS**

Color Grade **FANCY INTENSE PINK**

Clarity Grade **VS 2**

ADDITIONAL GRADING INFORMATION

Polish **EXCELLENT**

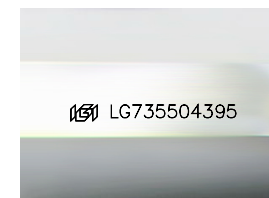
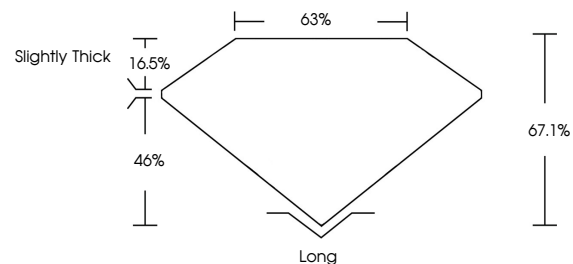
Symmetry **EXCELLENT**

Fluorescence **STRONG**

Inscription(s) **LG735504395**

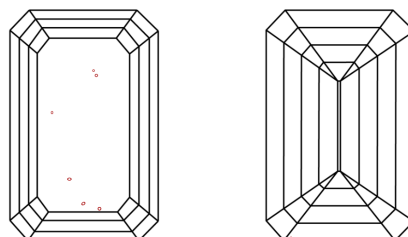
Comments: This Laboratory Grown Diamond was created by Chemical Vapor Deposition (CVD) growth process. Indications of post-growth treatment.

PROPORTIONS



Sample Image Used

CLARITY CHARACTERISTICS



KEY TO SYMBOLS

Red symbols indicate internal characteristics.
Green symbols indicate external characteristics.

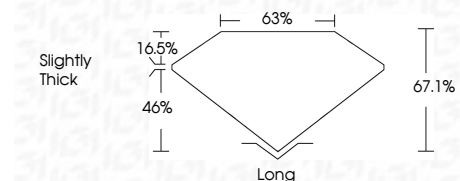
COLOR

D E F G H I J Faint Very Light Light

CLARITY

IF WS¹⁻² VS¹⁻² SI¹⁻² I¹⁻³

Internally Flawless Very Very Slightly Included Very Slightly Included Slightly Included Included



ADDITIONAL GRADING INFORMATION

Polish **EXCELLENT**

Symmetry **EXCELLENT**

Fluorescence **STRONG**

Inscription(s) **LG735504395**

Comments: This Laboratory Grown Diamond was created by Chemical Vapor Deposition (CVD) growth process. Indications of post-growth treatment.



September 24, 2025
IGI Report No LG735504395
EMERALD CUT

4.04 CARATS
Carat Weight
FANCY INTENSE PINK
Color Grade

VS 2
Clarity Grade

67.1%
Depth

63%
Table

Slightly Thick
Girdle

Long
Culet

EXCELLENT
Polish

EXCELLENT
Symmetry

STRONG
Fluorescence

LG735504395
Inscription(s)

Comments: This Laboratory Grown Diamond was created by Chemical Vapor Deposition (CVD) growth process. Indications of post-growth treatment.