



**ELECTRONIC COPY**

LG735505190  
Report verification at igi.org



September 25, 2025

IGI Report Number **LG735505190**

Description **LABORATORY GROWN DIAMOND**

Shape and Cutting Style **EMERALD CUT**

Measurements **9.41 X 6.45 X 4.56 MM**

**GRADING RESULTS**

Carat Weight **2.82 CARATS**

Color Grade **FANCY VIVID BLUE**

Clarity Grade **VS 1**

**LABORATORY GROWN DIAMOND REPORT**

September 25, 2025

IGI Report Number **LG735505190**

Description **LABORATORY GROWN DIAMOND**

Shape and Cutting Style **EMERALD CUT**

Measurements **9.41 X 6.45 X 4.56 MM**

**GRADING RESULTS**

Carat Weight **2.82 CARATS**

Color Grade **FANCY VIVID BLUE**

Clarity Grade **VS 1**

**ADDITIONAL GRADING INFORMATION**

Polish **EXCELLENT**

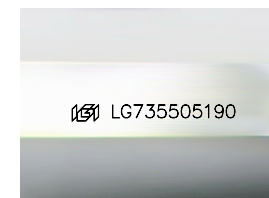
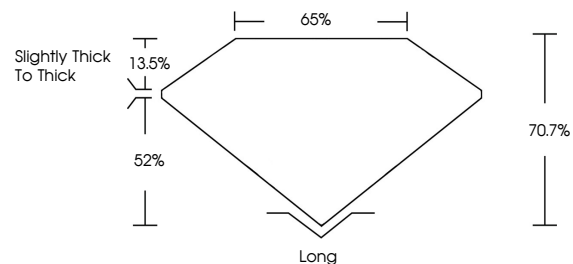
Symmetry **EXCELLENT**

Fluorescence **NONE**

Inscription(s) **IGI LG735505190**

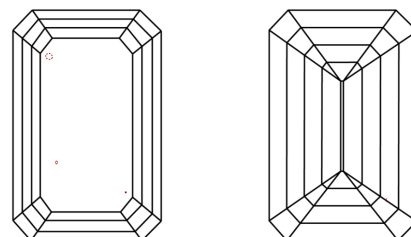
Comments: This Laboratory Grown Diamond was created by Chemical Vapor Deposition (CVD) growth process. Indications of post-growth treatment.

**PROPORTIONS**



Sample Image Used

**CLARITY CHARACTERISTICS**



**KEY TO SYMBOLS**

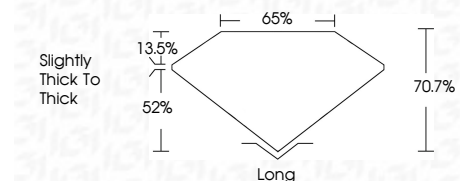
Red symbols indicate internal characteristics.  
Green symbols indicate external characteristics.

**COLOR**

D E F G H I J Faint Very Light Light

**CLARITY**

IF	WS <sup>1-2</sup>	VS <sup>1-2</sup>	SI <sup>1-2</sup>	I <sup>1-3</sup>
Internally Flawless	Very Very Slightly Included	Very Slightly Included	Slightly Included	Included



**ADDITIONAL GRADING INFORMATION**

Polish **EXCELLENT**

Symmetry **EXCELLENT**

Fluorescence **NONE**

Inscription(s) **IGI LG735505190**

Comments: This Laboratory Grown Diamond was created by Chemical Vapor Deposition (CVD) growth process. Indications of post-growth treatment.



**IGI**



September 25, 2025	IGI Report No LG735505190	2.82 CARATS	FANCY VIVID BLUE	VS 1	70.7%	65%	Slightly thick to thick	Long	EXCELLENT	EXCELLENT	NONE	IGI LG735505190
EMERALD CUT	9.41 X 6.45 X 4.56 MM	Carat Weight	Color Grade	Clarity Grade	Depth	Table	Graile	Culet	Polish	Symmetry	Fluorescence	Inscription(s)

Comments: This Laboratory Grown Diamond was created by Chemical Vapor Deposition (CVD) growth process. Indications of post-growth treatment.