



ELECTRONIC COPY

LG735505226
Report verification at igi.org



September 27, 2025

IGI Report Number **LG735505226**

Description **LABORATORY GROWN DIAMOND**

Shape and Cutting Style **KITE STEP CUT**

Measurements **9.76 X 7.17 X 3.77 MM**

GRADING RESULTS

Carat Weight **1.31 CARAT**

Color Grade **FANCY VIVID PINK**

Clarity Grade **VS 1**

September 27, 2025
IGI Report Number **LG735505226**
Description **LABORATORY GROWN DIAMOND**
Shape and Cutting Style **KITE STEP CUT**
Measurements **9.76 X 7.17 X 3.77 MM**

GRADING RESULTS

Carat Weight **1.31 CARAT**

Color Grade **FANCY VIVID PINK**

Clarity Grade **VS 1**

ADDITIONAL GRADING INFORMATION

Polish **VERY GOOD**

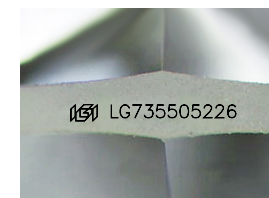
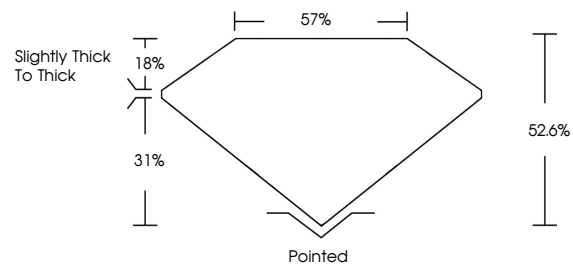
Symmetry **VERY GOOD**

Fluorescence **SLIGHT**

Inscription(s) **LG735505226**

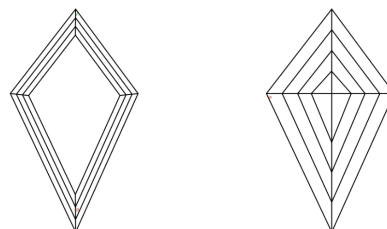
Comments: This Laboratory Grown Diamond was created by Chemical Vapor Deposition (CVD) growth process. Indications of post-growth treatment.

PROPORTIONS



Sample Image Used

CLARITY CHARACTERISTICS



KEY TO SYMBOLS

Red symbols indicate internal characteristics.
Green symbols indicate external characteristics.

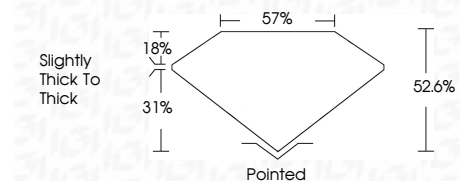
COLOR

D E F G H I J Faint Very Light Light

CLARITY

IF VS¹⁻² VS¹⁻² SI¹⁻² I¹⁻³

Internally Flawless Very Very Slightly Included Very Slightly Included Slightly Included Included



ADDITIONAL GRADING INFORMATION

Polish **VERY GOOD**

Symmetry **VERY GOOD**

Fluorescence **SLIGHT**

Inscription(s) **LG735505226**

Comments: This Laboratory Grown Diamond was created by Chemical Vapor Deposition (CVD) growth process. Indications of post-growth treatment.



September 27, 2025	1.31 CARAT	Polished
IGI Report No LG735505226	FANCY VIVID PINK	VERY GOOD
KITE STEP CUT	VS 1	VERY GOOD
9.76 X 7.17 X 3.77 MM	62.6%	SLIGHT
Carat Weight	57%	Inscription(s)
Color Grade	Slightly thick to thick	LG735505226
Clarity Grade		
Depth		
Table		
Grailes		
Culet		
Polish		
Symmetry		
Fluorescence		
Inscription(s)		

Comments: This Laboratory Grown Diamond was created by Chemical Vapor Deposition (CVD) growth process. Indications of post-growth treatment.