

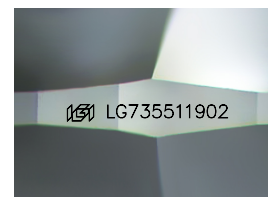
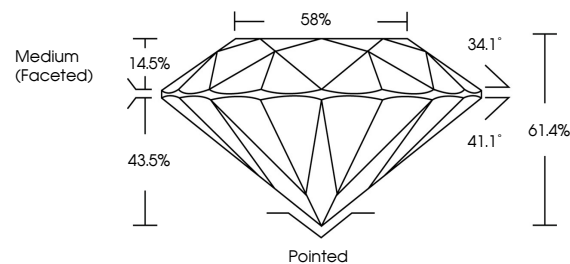


ELECTRONIC COPY

LABORATORY GROWN DIAMOND REPORT

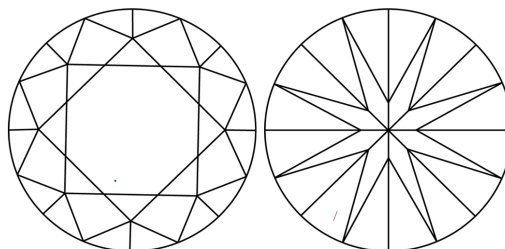
LG735511902
Report verification at igi.org

PROPORTIONS



Sample Image Used

CLARITY CHARACTERISTICS



KEY TO SYMBOLS

Red symbols indicate internal characteristics.
Green symbols indicate external characteristics.

COLOR

D E F G H I J Faint Very Light Light

CLARITY

FL	IF	VVS ¹⁻²	VS ¹⁻²	SI ¹⁻²	I ¹⁻³
Flawless	Internally Flawless	Very Very Slightly Included	Very Slightly Included	Slightly Included	Included

LABORATORY GROWN DIAMOND REPORT



September 30, 2025

IGI Report Number **LG735511902**

Description	LABORATORY GROWN DIAMOND
-------------	--------------------------

Shape and Cutting Style **ROUND BRILLIANT**

Measurements 7.26 - 7.31 X 4.48 MM

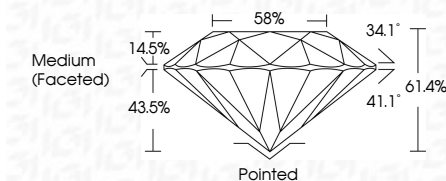
GRADING RESULTS

Carat Weight **1.46 CARAT**

Color Grade	E
-------------	---

Clarity Grade VS 1

Cut Grade **IDEAL**



ADDITIONAL GRADING INFORMATION

Polish **EXCELLENT**Symmetry **EXCELLENT**Fluorescence **NONE**Inscription(s) LG735511902

Comments: This Laboratory Grown Diamond was created by Chemical Vapor Deposition (CVD) growth process.
Type IIa



© IGI 2020, International Gemological Institute

FD - 10 20

www.igi.org

THIS DOCUMENT WAS PRODUCED WITH THE FOLLOWING SECURITY MEASURES: SPECIAL DOCUMENT PAPER, INK SCREENS, WATERMARK, BACKGROUND DESIGNS, HOLOGRAM AND OTHER SECURITY FEATURES NOT LISTED AND DO EXCEED DOCUMENT SECURITY INDUSTRY GUIDELINE

September 30, 2025
IGI Report No LG735511902
ROUND BRILLIANT

ROUND BRILLIANT	7.26 - 7.31 X 4.48 MM	1.46 CARAT
	Carat Weight	E
	Color Grade	
	Clarity Grade	VS 1
	Cut Grade	IDEAL
	Depth	61.4%
	Table	58%
	Girdle	Medium (Excellent)

Culet	Pointed
Polish	EXCELLENT
Symmetry	EXCELLENT
Fluorescence	NONE

Comments:
This Laboratory Grown Diamond was
created by Chemical Vapor Deposition
(CVD) growth process.