



ELECTRONIC COPY

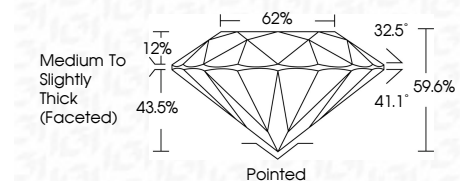
LG735512154
Report verification at igi.org



September 30, 2025
IGI Report Number LG735512154
Description LABORATORY GROWN DIAMOND
Shape and Cutting Style ROUND BRILLIANT
Measurements 7.90 - 7.96 X 4.73 MM

GRADING RESULTS

Carat Weight 1.84 CARAT
Color Grade E
Clarity Grade VVS 2
Cut Grade EXCELLENT



ADDITIONAL GRADING INFORMATION

Polish EXCELLENT
Symmetry EXCELLENT
Fluorescence NONE
Inscription(s) IGI LG735512154
Comments: This Laboratory Grown Diamond was created by Chemical Vapor Deposition (CVD) growth process. Type IIa



September 30, 2025
IGI Report No LG735512154
ROUND BRILLIANT
1.84 CARAT E
VVS 2 EXCELLENT
7.90 - 7.96 X 4.73 MM
Color Grade E
Clarity Grade VVS 2
Cut Grade EXCELLENT
Depth 43.5%
Table 62%
Girdle Medium To Slightly Thick (Faceted)
Culet Pointed
Polish EXCELLENT
Symmetry EXCELLENT
Fluorescence NONE
Inscriptions(s) IGI LG735512154
Comments: This Laboratory Grown Diamond was created by Chemical Vapor Deposition (CVD) growth process. Type IIa

September 30, 2025
IGI Report Number LG735512154
Description LABORATORY GROWN DIAMOND
Shape and Cutting Style ROUND BRILLIANT
Measurements 7.90 - 7.96 X 4.73 MM

GRADING RESULTS

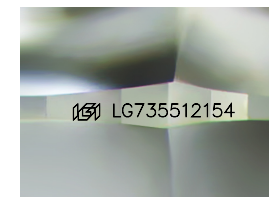
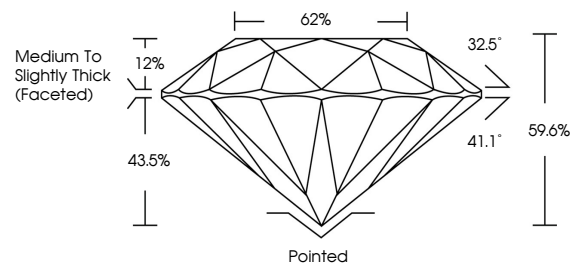
Carat Weight 1.84 CARAT
Color Grade E
Clarity Grade VVS 2
Cut Grade EXCELLENT

ADDITIONAL GRADING INFORMATION

Polish EXCELLENT
Symmetry EXCELLENT
Fluorescence NONE
Inscription(s) IGI LG735512154

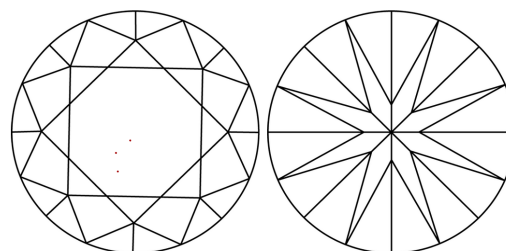
Comments: This Laboratory Grown Diamond was created by Chemical Vapor Deposition (CVD) growth process. Type IIa

PROPORTIONS



Sample Image Used

CLARITY CHARACTERISTICS



KEY TO SYMBOLS

Red symbols indicate internal characteristics.
Green symbols indicate external characteristics.

COLOR

D E F G H I J Faint Very Light Light

CLARITY

FL IF VVS 1-2 VS 1-2 SI 1-2 I 1-3
Flawless Internally Flawless Very Very Slightly Included Very Slightly Included Slightly Included Included

